

Arizona Theatre Company, Center REPeritory Company, SF Playhouse, Syracuse Stage, Boston Theatreworks and various universities and training programs. She has served on the faculties of UC Davis, Syracuse University, ACT, Academy of Art University, Naropa University and Shakespeare and Company. She has performed regionally with ACT, Syracuse Stage, California Shakespeare Theatre, Shakespeare/Santa Cruz, Marin Theatre Company, SF Shakespeare, Shakespeare/LA, Shakespeare and Company, GeVa Theatre Center, Aurora Theatre, Magic Theatre and the Los Angeles Women's Shakespeare Company. She has a BA from Wesleyan University, an MFA from ACT and is a designated Linklater voice instructor.

Meg Honey (Dramaturg) teaches Advanced Placement United States History at Saint Joseph Notre Dame High School where she also serves as the Social Studies Department Chair. Meg earned her Master's Degree in United States History at San Jose State University, and her research interests include the Civil Rights Movement, Women's History/Gender Studies, and California History. In addition to her high school teaching, Meg serves as the Single Subject Credential Program Performance Assessment for California Teachers Coordinator and as an Adjunct Professor in the Kalmanovitz School of Education at Saint Mary's College of California. Meg has spent a considerable amount of time in the American South where she has met and traveled with veterans of the Civil Rights Movement.

Dave Maier (Fight Director) is a Full Instructor of Theatrical Combat with Dueling Arts International and is currently the resident fight director for California Shakespeare Theater (Orinda), The Shotgun Players (Berkeley) and Thrillpeddlers (San Francisco). His work has been seen at American Conservatory Theatre, Berkeley Repertory Theatre, SF Playhouse, La Jolla Playhouse, San Jose Rep, California Shakespeare Theatre, Shakespeare Santa Cruz, Magic Theatre, African American Shakespeare Co, and Berkeley Opera, among others. He has been nominated for several Bay Area Drama Critics Circle awards and has won the award for his work on Culture Clash's *Zorro In Hell* (2006) and *The Pillowman* (2007).

Joe Coe (Assistant to the Production Manager) This is Joe's third season with Center REP and he couldn't be happier to be a part of such an amazing team of professionals and friends! Joe has had the pleasure of working with such companies as Berkeley Repertory Theatre, American Conservatory Theatre, Summer Repertory Theatre, Suicide Kings touring production of *In Spite of Everything*, Boston Conservatory, SpeakEasy Stage Company, and Jose Mateo Ballet Theatre. Joe would like to thank all of his colleagues here at the LCA for a great season and for making it such a joy to work here!

Alex Logemann (Deck Manager) is celebrating his 25th show backstage with Center REP. Alex has been backstage for nine seasons and is beyond pleased to be continuing wearing all black for such an amazing group. Alex has also crewed shows for Contra Costa Musical Theatre and with Diablo Theatre Company (DLOC). Alex is a proud member of the Fantasy Forum Actors Ensemble. He wishes to express how much fun it is to do theatre here in Walnut Creek and is very thankful for our community. Our theatre family is an overflowing fountain of support and it is truly remarkable. Alex is excited to see what the future holds for Center REP and wants you to please join him as we "celebrate the power of the human imagination!"

Scott Denison (Managing Director) has been the General Manager for the Leshler Center for the Arts since it opened 20 years ago and has worked for the Arts in this area for 38 years. He has directed over 150 productions, including *The Wizard of Oz*, the musical hit *Cinderella* and *Disney's Beauty and the Beast* and for the past 14 seasons Center REP's *A Christmas Carol* as well as all Fantasy Forum productions since 1972. Scott has also designed lights for over 250 productions, including

the national touring production of *Sylvia*. In 1979 he created the Shellie Awards, which annually honors outstanding performing arts achievement in Contra Costa County. Under Denison's guidance the Leshler Center for the Arts presents over 900 public events each year. Scott created the *Chevron Family Theatre Festival* which hosted over 7,000 guests last year. He is also the Managing Director of the Center REPeritory Company producing professional productions each season; and is the director and co-founder of Fantasy Forum Actors Ensemble, an adult family performing arts company which presents programs for the young and young at heart. Scott will also be directing *The Lady with All the Answers* for REP and CCMT's *Hairspray* in the Spring.

OUR SPONSORS


Chevron (Season Sponsor) has been the leading corporate sponsor of Center REP and the Leshler Center for the Arts for the past eight years. In fact, Chevron has been a partner of the LCA since the beginning, providing funding for capital improvements, event sponsorships and more. Chevron generously supports every Center REP show throughout the season, and is the primary sponsor for events including the Chevron Family Theatre Festival in July. Chevron has proven itself not just as a generous supporter, but also a valued friend of the arts.

Diablo Regional Arts Association (DRAA) (Season Partner) is both the primary fundraising organization of the Leshler Center for the Arts (LCA) and the City of Walnut Creek's appointed curator for the LCA's audience outreach. DRAA's role in the community is all about building partnerships with the focused goal of enhancing artistic quality at the LCA and providing opportunities for everyone to enjoy the arts. Through partnerships with the LCA and its producers, individual donors, corporate and foundation sponsors and the City of Walnut Creek, DRAA plays a vital role in advancing the arts for the betterment of the community. Please visit us online at www.draa.org.

Contra Costa Times (Season Media Sponsor) In the East Bay, the largest newspaper of the Bay Area News Group is the Contra Costa Times and its sister editions, the West County Times, Valley Times, San Ramon Valley Times and East County Times. The Times, was judged the best newspaper in its circulation category in the state five times in a six-year period by the California Newspaper Publishers Association. In 2005, it won the prestigious national Freedom of Information Award from Associated Press Managing Editors. And, in 2007, it was honored by the California Newspaper Publishers Association for its leadership on public records.

THANK YOU TO OUR
OPENING NIGHT DINNER SPONSORS:
Fleming's Prime Steakhouse & Wine Bar
Oi-C Bowl
Scott's Seafood Grill and Restaurant

ADDITIONAL THANKS TO:
Massimo's Ristorante
Walnut Creek Baking Company
Waters Moving and Storage
Associated Services-Alta Water
Shannon and Mike Demers
Hyatt Summerfield Suites

CITY COUNCIL Cindy Silva, Mayor Kristina Lawson Kish Rajan Robert Simmons Gary Skrel CITY MANAGER Ken Nordhoff DIRECTOR Arts, Recreation and Community Services Barry Gordon	 CITY OF WALNUT CREEK	ARTS COMMISSION Chair Reginald Marshall Fritz Brunner Carol Fowler Suzanne Masella Jacquelyn Smith
---	---	---

ABOUT CENTER REPERTORY COMPANY

Center REP is the resident, professional theatre company of the Leshler Center for the Arts. Our season consists of eight productions a year – a variety of musicals, dramas and comedies, both classic and contemporary, that continually strive to reach new levels of artistic excellence and professional standards.


Our **mission** is to celebrate the power of the human imagination by producing emotionally engaging, intellectually involving, and visually astonishing live theatre, and through Outreach and Education programs, to enrich and advance the cultural life of the communities we serve.

What does it mean to be a producing theatre?
We hire the finest professional directors, actors and designers to create our productions at Center REP. These are not touring productions – they're conceived and developed here, the sets and costumes are built in our shops, and the actors rehearse in our rehearsal hall. Whether the production is a Bay Area premiere or a Shakespearean classic, each is devised to be a one of a kind, artistic creation that will be a unique theatre experience for our audience.

What does it mean to be a professional theatre?
It means that all our artists and artisans are career theatre-practitioners. Many of the actors in this production are members of Actors' Equity Association; many of our directors and designers are members of professional unions. All do theatre because it is their profession and their passion.

We are very proud to have the opportunity to produce professional theatre for our community in the beautiful theatres here at the Leshler Center for the Arts. Thank you for your support!


Center REPeritory Company	
Managing Director - Scott Denison Artistic Director - Michael Butler	
<i>Production Services</i> Production Svcs Coordinator Toni Kilcoyne Technical Staff Doug Alvey John Earls Nicole Iannaccone Mitch Kell Iain McKay Steve Pino Garrick Schuster Josh Stouffer <i>Audience Services</i> Audience Svcs Coordinator Courtney Egg Ticket Office Staff Caitlin Downing Elizabeth Fazzio Kiersten Jones Karla Kopffhammer Britt Lauer Sarah Leahy Hillary Pearsall Benjamin Potter Jeremiah Vierling Usher Coordinator Carolyn Orlik <i>Costumes</i> Costume Manager Michael A. Berg Assistant Costumers Joe Coe Jenine Hillaire <i>Education</i> Education Directors Jeff Draper Kerri Shawn	<i>Marketing</i> Marketing Director Gabe Marin Marketing Assistant Casi Maggio <i>Production</i> Production Manager Jeff Collister <i>Technical</i> Technical Director Joshua Lipps Master Electrician Ray Oppenheimer Carpenters Daniel Casini Jordan Scott Cameron Swartzell Chris Swartzell Scenic Artist Kelly Tighe Assistant Set Designer Mikako Suzuki Asst. to the Production Manager Joe Coe Deck Manager Alex Logemann Production Assistants Kourtney Mc Cray John Valentine <i>Administration</i> Asst. to the Managing Director Gail Pfeifer Program Linda Nomura



CENTER REPERTORY COMPANY OF WALNUT CREEK

Michael Butler, Artistic Director **Scott Denison, Managing Director**

presents



To Kill a MOCKINGBIRD

By Harper Lee
Adapted by **Christopher Sergel**
Directed by **Michael Butler**

Lighting Designer
Kurt Landisman

Sound Designer
Will McCandless

Dramaturg
Meg Honey

Scenic Designer
Melpomene Katakalos

Dialect Coach
Lisa Anne Porter

Prop Mistresses
Mia Baxter & Seren Helday

Stage Manager
Susan M. Reamy*

Costume Designer
Michael A. Berg

Fight Director
Dave Maier


Casting Director
Jennifer Perry

Cast


Danny Christensen	Joseph Ingram	Hunter Milano
Tom Flynn	Suzanne Irving*	Aaron Murphy
Taron C. Hensley	Dorian Lockett	Allison L. Payne
Dan Hiatt*	Olivia Lowe	Henry Perkins
James Hiser	Christine Macomber	Michael Ray Wisely*
	Lina Makdisi	

Margaret Leshler Theatre
April 1 - 30, 2011
Leshler Center for the Arts


Season Sponsor




Season Partner




Season Media Sponsor




Foundation Sponsor





*Member of Actors' Equity Association, the Union of Professional Actors and Stage Managers in the United States
The Director is a member of the Stage Directors and Choreographers Society
The Lighting Designer is a member of United Scenic Artists Union
Center REP is a member of Theatre Communications Group (TCG), The National Organization for the American Theatre and Theatre Bay Area



CAST (in order of appearance)

Jean Louise FinchSuzanne Irving*
JemDanny Christensen
Scout.....Olivia Lowe
Walter Cunningham.....Aaron Murphy
Atticus Finch.....Dan Hiatt*
Calpurnia.....Allison L. Payne
Mrs. Dubose.....Christine Macomber
Dill.....Hunter Milano
Judge TaylorTom Flynn
Heck TateTaron C. Hensley
Bob EwellJames Hiser
Reverend SykesDorian Lockett
Mr. Gilmer.....Michael Ray Wisely*
Mayella Ewell.....Lina Makdisi
Tom Robinson.....Joseph Ingram
Boo RadleyHenry Perkins

There will be one 15 minute intermission

TIME and PLACE

Maycomb, Alabama 1935

The porches, yards and street that make up the Finch neighborhood

In front of the jailhouse on the town square

The courthouse

CAST BIOGRAPHIES

Danny Christensen (Jem) is thrilled to be making his Leshar debut under Michael Butler with Center REP. He has studied with Young REP, ACT and Cal Shakes' Actors Workshops. Stage credits include: *Sherlock Holmes & the Hound of Baskerville* (Sherlock), *Beauty & the Beast* (The Prince), *Into the Woods*, *Bye Bye Birdie*, *Honk* and *The Sound of Music* (Frederick). He is currently a student at Miramonte and enjoys playing baseball and the sax.



Tom Flynn (Judge Taylor) is delighted to return to Center REP, where he last appeared in Tennessee Williams' *Summer and Smoke*. Recent roles include: FDR in *Annie* at Diablo Theatre Company; the title role in *The Wizard of Oz* at Berkeley Playhouse; the Bishop in *Saint Joan* at CCCT; Kris Kringle in *Miracle on 34th St.* at Town Hall Theatre; and Norman in *On Golden Pond* at Altarena Playhouse. Tom is a member of Theatre Bay Area, and Board President of Oakland-based Stagebridge, America's oldest senior theatre company.



Taron C. Hensley (Heck Tate) is thrilled to join Center REP's production of *To Kill a Mockingbird*. In his 20 years of Theatre he has earned a B.A. in Theatre Arts (Performance and Directing) from SFSU and worked in many theatres from community to professional houses. He spends his days as Theatre Arts program director and teacher at Las Lomas High School. His recent performance credits include: Zach in *A Chorus Line*, Ali Hakim in *Oklahoma*, Picasso in *Picasso at the Lapin Agile*, Quixote in *Man of La Mancha*, and a Shellie nominated performance of Bob Ewell in *To Kill a Mockingbird*, in addition to local voice and commercial work. A very special thanks to his friends and family for all their love and support.



Dan Hiatt* (Atticus Finch)

appeared most recently in *The 39 Steps* at TheatreWorks in Mountain View. Other Bay Area appearances include *Round and Round the Garden*, *Happy End*, *The Rivals*, *Rosencrantz and Guildenstern are Dead*, and *The Matchmaker* at American Conservatory Theatre; *Joe Turner's Come and Gone*, *Menocchio* and *Dinner with Friends* at Berkeley Repertory Theatre; *This Wonderful Life*, *A Flea in Her Ear*, *Sylvia*, and *The Immigrant* at San Jose Repertory Theatre; *The Twentieth Century* and *Spinning into Butter* at TheatreWorks; and *Pastures of Heaven*, *Uncle Vanya*, *Richard III*, *Nicholas Nickleby* and many others at California Shakespeare Theatre, where he is an associate artist. Mr. Hiatt has also performed at theatres across the country, including Seattle Repertory Theatre, Huntington Theatre, Ford's Theatre, Studio Arena Theatre, Pasadena Playhouse, Arizona Theatre Company, Idaho Shakespeare Festival, and Stage West in Toronto.



James Hiser (Bob Ewell)

has appeared locally with such theater companies as Shotgun Players, California Conservatory Theatre, Town Hall Theatre, Marin Shakespeare Company, and the Eugene O'Neill Foundation. Film credits of note include *Mumford*, *Interview with the Assassin*, *Birth of the Vampire*, *Bottle Shock*, *Sexual Tension: The Super Adventures of Steve and Stephen*, *Grave Dawn*, and most recently *Us*. Television credits range from appearances on *Nash Bridges* for CBS, to the made-for-television PBS special *Ralph Ellison's King of the Bingo Game*, to regional and national commercial spots for Hardee's, Diet Coke, AMP Energy drink, and KGO Radio. Ventures into the World Wide Web arena have yielded two pilot episodes for potential series pick up: *Pennies For the Juggernaut* and *n2Gmz*. Master of Fine Arts, UC Davis.



Joseph Ingram (Tom Robinson)

Recent San Francisco State Graduate with a Degree in performance Theater. Raised in Oakland California, he has been performing and teaching theater shows close now to a decade. This is his first time performing outside of State as well as his first time working with Center REP and he is more than happy to be involved with the production team of *To Kill a Mockingbird*.



Suzanne Irving* (Jean Louise Finch)

previously appeared with Center REP as Rose Arnett in *Enchanted April*. Other credits include appearances with the Oregon Shakespeare Festival (9 seasons), the Alabama Shakespeare Festival (4 seasons, associate artist), the Alliance Theatre, Pittsburgh Public Theatre, A Contemporary Theatre, Indiana Repertory Theatre, TheatreVirginia, and GeVa Theatre. Locally, she has performed with Shakespeare Santa Cruz, the California Shakespeare Festival, San Jose Repertory Theatre, and Sacramento Theatre Co. Suzanne is a graduate of UC Santa Barbara and the University of Washington's Professional Actor Training Program, and recently earned her certificate in Teaching English as a Second Language (TESL) from UC Berkeley extension. For my Dad and my Brother.



Dorian Lockett (Reverend Sykes),

a Bay Area native is extremely honored to be working his first venture with Center REP. His recent credits include *IPH* (Brava), *Taming of the Shrew* (Rhythmyx Cultural Center Theatre) and *Cinderella* (African American Cultural Center Theatre). He loves high-fives, hugs and smiles. Enjoy the show!



Olivia Lowe (Scout)

is thrilled to be part of *To Kill a Mockingbird*. She attends Julia Morgan School for Girls. Olivia has been part of Center REP's Young REP program for two years now, and she enjoys every minute of it. She was most recently seen as Belinda in *A Christmas Carol* (Center REP), and Young REP's Musical Theater Performance Workshop and Acting Showcase. She wants to thank her friends and family for being so inspirational and supportive.



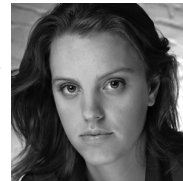
Christine Macomber (Mrs. Dubose)

is making her debut at Center REP. She returned to singing and discovered theatre at the start of this century after a long federal government career. Since then, she has appeared in many shows with 42nd Street Moon, Lamplighters Music Theatre, and she recently began doing plays. She won a Bay Area Critics' Circle Award for *The Cocktail Hour*, and has performed with Shakespeare's Associates of Livermore in *A Midsummer Night's Dream*, *Twelfth Night* and *Comedy of Errors*. Other shows she's done in the last two years are *Doubt*, *Blithe Spirit*, *Into the Woods* (here at the Leshar), *The Lion in Winter* and *The Gin Game*. Chris is a violinist in The Exeter String Quartet and makes her home in Oakland.



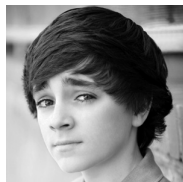
Lina Makdisi (Mayella Ewell)

appeared most recently in *Top Girls* at Ross Valley Players. She holds a B.A. in Theatre and English from Wesleyan University.



Hunter Milano (Dill)

is a freshman attending Amador Valley High School in Pleasanton, and is completely grateful and excited to be in Center REP's production of *To Kill a Mockingbird*. Hunter's previous performances include Edgar in Tri-Valley Repertory's *Ragtime*, Center REP's 2008 *A Christmas Carol* as Boy Scrooge, and Civic Arts Stage's *The Boxcar Children* as Benny Alden. Hunter participated in Center REP's Young REP theatre program, and intends on doing it again this summer. Right now, Hunter is currently involved in Pleasanton's Creatures of Impulse improv troupe. He would like to thank his ever supportive mother, father, his friends Jake, Mark, Drew, Stefan, and Cameron for being awesome, his sister, Kelsey, for being the greatest influence. Hunter is happy to work with this brilliant cast and crew, and is fully prepared to become the supposedly young Truman Capote in this amazing production.



Aaron Murphy (Walter Cunningham)

was born and raised in the Bay Area, starting as a dancer with the San Francisco Ballet. As an actor he has appeared in productions of Michael Frayn's *Here*, David Mamet's *Glengarry Glen Ross* and *American Buffalo*, Harold Pinter's *The Homecoming*, *Betrayal*, and *Ashes to Ashes*, Chekhov's *Uncle Vanya*, Ibsen's *Hedda Gabler*, and Tom Stoppard's *The Real Inspector Hound*. Most recently he performed with SF Playhouse in *Seven Days*, at Haggood Theater in *Gaslight*, and as Father Flynn in *Doubt* at Interplayers in Spokane, WA. He co-founded the San Francisco based theatre company Spare Stage.



Allison L. Payne (Calpurnia)

An eclectic being indeed...Allison L. Payne would like to thank her ancestors and her family legacy, for providing her the fertile land from which she presents her most beloved characters. She is honored and thrilled to collaborate with Center REP after a transformative sabbatical from the theatre. Graciously balancing the "Stage of Life" has proved her greatest triumph! She continues to hold the highest vision for her craft: inspiring and being inspired.



Henry Perkins (Boo Radley)

is pleased to be working with the Center REP team again. He was last seen (if you looked really hard) as Rudge in *A Christmas Carol* in '06 and '07. As a scenic carpenter for REP, Henry worked on *Bingo!*, *How the Other Half Loves*, *Hank Williams: Lost Highway*, *Mousetrap*, *Nixon's Nixon*, *Midsummer*, *The Musical of Musicals*, *Ain't Misbehavin'*, *Doubt* and *A Christmas Carol*. He has been seen on stage with CCMT (*Titanic*, *Grease*, *South Pacific*), Town Hall Theater (*Lend Me a Tenor*, *The Rocky Horror Show*, *The Weir*, *Bleacher Bums*, *Miracle on 34th St.*, *The Graduate*), DAE (*Laughter on the 23rd Floor*) and many others. Henry is the Master Carpenter at Contra Costa Civic Theater in El Cerrito. He works as an independent contractor building scenery for many theater companies in the Bay Area, and is a proud member of Fantasy Forum Actors Ensemble.



Michael Ray Wisely* (Mr. Gilmer)

returns to Center REP after an extended run of Chekhov's *Seagull* at Marin Theatre Company. Well known to bay area audiences, Michael Ray has performed locally and at other west coast theatres for over 20 years. Credits for Center REP: 14 appearances, including his recurring role as Christmas Present in *A Christmas Carol*. Other theatres include: Berkeley Repertory Theatre, TheatreWorks, Aurora Theatre Co., Magic Theatre, SF Shakespeare, San Jose Stage, San Jose Repertory, American Musical Theatre, Marin Shakespeare and many others. Michael Ray has starred and guest-starred in television movies and series, directed for the stage, and recently co-founded a production company (3 and 1/2 egos productions) to continue his work as a producer/director in film.



CREATIVE TEAM

Harper Lee (Author) Born in 1926, Harper Lee grew up in depression-era Monroeville, Alabama. The youngest of four children, Lee followed her attorney father into law. Lee attended the University of Alabama law school and spent the 1950's working for Eastern Airlines and writing short stories. On the suggestion

of her editor, Lee developed one of her short stories into her only novel, *To Kill A Mockingbird*, published in 1960. *Mockingbird* won the 1961 Pulitzer Prize and spent 80 weeks on the bestseller list. Translated into 40 languages with 30 million copies in print, *Mockingbird's* success also inspired the box office smash, *To Kill a Mockingbird*, starring Gregory Peck. Lee published several essays in the early 1960s but, as a true literary recluse, has published nothing since then and refuses all requests for interviews. The elusive Lee divides her time between Monroeville and New York City.

Christopher Sergel (Adaptation) enjoyed many adventures throughout the world. As captain of the schooner Chance, he spent two years in the South Pacific; as a writer for *Sports Afeld* magazine, he lived in the African bush for a year; as a lieutenant commander during WWII, he taught celestial navigation; as a playwright, his adaptation of Sherwood Anderson's *Winesburg, Ohio* was seen on Broadway. But throughout his life, his greatest adventure and deepest love was his work with Dramatic Publishing. During this time, he wrote adaptations of *To Kill a Mockingbird*, *Cheaper By the Dozen*, *The Mouse That Roared*, *Up the Down Staircase*, *Fame*, *Black Elk Speaks* and many more.

Michael Butler (Director/Artistic Director) is in his fifth season as Artistic Director of Center REP, where he directed *Around the World in 80 Days*, *Picasso at the Lapin Agile*, *The Marriage of Figaro*, *How the Other Half Loves*, *Hank Williams: Lost Highway*, *Nixon's Nixon*, *A Midsummer Night's Dream*, *Enchanted April*, *Witness For The Prosecution*, *A Number* and *Boeing-Boeing*, as well as acted in REP's productions of *The Mousetrap* and *Noises Off*. His directing work has also been seen at San Jose Rep, Cleveland Playhouse, Seattle Rep, Laguna Playhouse, Marin Theatre Company, Aurora Theatre Company, San Jose Stage, Shakespeare Santa Cruz, and The Juilliard School, of which he is a graduate. As an actor, Michael has worked on Broadway and off, in regional theatres, film and television. He is a published songwriter and the co-writer and composer of numerous music-theatre pieces, which he has directed and performed in NY, LA, and at festivals in India and Morocco. In his career as a performer he has also danced with the Erick Hawkins Dance Company, portrayed the villainous Pierre LeChance on *The Guiding Light*, and played guitar and harmonica in many rock, blues, and country western bands at all the notable dives in NYC.

Melpomene Katakalos (Scenic Designer) has designed scenery for over sixty productions in the Bay Area over the last twelve years at many companies including La Jolla Playhouse, ACT Conservatory, California Shakespeare Theater, Center REP, TheatreWorks, Magic Theatre, San Francisco Mime Troupe, Cornerstone Theatre in Los Angeles, Marin Theatre Company, Aurora Theatre, Intersection for the Arts, San Francisco Shakespeare Festival, Thick Description, San Francisco Playhouse, A Traveling Jewish Theatre, Word for Word, Foothill Theatre, Napa Valley Repertory Theater, The Cutting Ball, Shotgun Players, Theatre Rhinoceros, and Berkeley Opera. Ms. Katakalos is also a founding member of Crowded Fire, dedicated to producing new and contemporary works. She is twice the recipient of the San Diego Playbill Award for her designs of the West Coast premiere of Sarah Ruhl's *Eurydice*, and *Marat/Sade*. She was named Best Set Designer of 2008 in The East Bay Express. Recently she was nominated for a BATCC Award for her design of Woody Guthrie's *American Song* at MTC. She received her M.F.A. at UC San Diego and her B.F.A. at Ithaca College, NY. Immense thanks to Timmy and Lulu.

Will McCandless (Sound Designer) is a sound designer and audio engineer for Bay Area theatres and he is a Collective Member of the San Francisco Mime Troupe. His designs have been heard at Center REP, Aurora Theatre Company, Marin Theatre Company, Magic Theatre, ACT @ The Zeum, Golden Thread, Solano College Theatre, Alter Theater, University of

San Francisco, Climate Theater, and The San Francisco Mime Troupe. Will has been a recipient of the Bay Area Theater Critics Circle Award and the Landisman Fellowship for theatrical designers and technicians.

Kurt Landisman (Lighting Designer) Local audiences will be familiar with his work through past productions designed for Center REP including *Dracula*, *She Loves Me*, *Noises Off*, *All Shook Up*, *Cabaret*, *Ain't Misbehavin'*, *Musical of Musicals (The Musical!)*, *A Midsummer Night's Dream*, *The Mousetrap*, *How the Other Half Loves*, *Around the World in 80 Days*, and *Fugitive Kind*. His designs have been seen throughout the Bay Area at many theaters including San Francisco Opera, ACT, Berkeley Rep, San Jose Rep, Theatreworks, California Shakespeare Festival, The Magic Theatre, and Marin Theatre Company. Locally his work has garnered 16 Bay Area Critics Circle Awards, 5 LA Dramalogue Awards and 4 Shellie Awards. Nationally, his work has been seen at many regional opera & ballet companies, including the Los Angeles Opera, Minnesota Opera, Virginia Opera, Tulsa Opera, and Ballet Arizona. His designs have also been presented off-Broadway, represented at Circle Rep, and the Douglas Fairbanks Theatres. Other designs internationally include world premieres of plays by Sam Shepard in Japan, and Singapore, as well as the San Francisco Opera in Shanghai, China, and the Moscow Circus in Tokyo, Japan.

Michael A. Berg (Costume Designer) is quite happy to be returning to Center REP as Costume Designer for this season's production of *To Kill a Mockingbird*. Having been born in the southern part of the United States, this story stirs up many childhood memories... good and bad. The story is as fresh today as it was when it was written and carries a wagon load of life lessons to be learned by one and all. Michael recently moved to the East Bay from Petaluma and is very thankful to not have to make the commute trip everyday! Aside from being the Costume Shop Manager for Center REP, Michael is also the full time costumer for Ross Valley Players in Marin. He will be designing the wardrobe for *The Complete History of America (abridged)* at Marin Shakes this summer.

Mia Baxter (Prop Mistress) is happy to be a part of Center REP's 44th season! She has designed props and costumes for various theatres in the Bay Area. Most recently, she has had the pleasure of working on productions at Aurora Theatre, CalShakes, Marin Theatre Company, ACT Conservatory and SF Playhouse. She has also worked with The Jewish Theatre, Sacramento Opera, Music Circus, Word for Word, Teatro Esperanza, and Intersection for the Arts. She is an alumni of San Francisco State University.

Seren Helayd (Prop Mistress) has provided props for multiple shows around the Bay Area. She is resident Props Artisan for Marin Theatre Company and has worked for Town Hall, Cal Shakes, S.F. Playhouse and A.C.T. She worked previously as the Master Carpenter at New Conservatory Theatre Center in San Francisco. She was also Technical Director of the Live Theatre Workshop in Tucson, Arizona, in addition to working as a designer, performer, and manager. Her past work with Center REP includes *Witness for the Prosecution*, *Noises Off*, and *Dracula*.

Susan M. Reamy* (Stage Manager) is pleased to be working at Center REP for the first time. Her Bay Area stage management credits include eighteen productions for the Aurora Theatre Company in Berkeley, as well as experience with California Shakespeare Theatre, Berkeley Repertory Theatre, San Francisco Opera Center, Marin Theatre Company, Magic Theatre, A Traveling Jewish Theatre and San Francisco Shakespeare Festival. Susan holds a Master of Fine Arts degree in Stage Management from the University of Illinois at Champaign-Urbana.

Lisa Anne Porter (Dialect Coach) is a professional actress, vocal coach and director. She has coached over fifty professional productions at Berkeley Repertory Theatre, San Jose Repertory Theatre, Theatreworks,

