



CENTER REPERTORY COMPANY OF WALNUT CREEK

Michael Butler, Artistic Director

Scott Denison, Managing Director

presents

XANADU

Book by
Douglas Carter Beane

Music by
Jeff Lynne & John Farrar

Lyrics by
Jeff Lynne & John Farrar

Based on the Universal Pictures film
Screenplay by Richard Danus & Marc Rubel

Originally produced on Broadway by Robert Ahrens, Dan Vickery,
Tara Smith/B.Swibel, Sara Murchson/Dale Smith & Cori Smulyan

Scenic Designer
Kelly Tighe
Sound Designer
Jeff Mockus

Costume Designer
Victoria Livingston-Hall
Wig Designer
Judy Disbrow
Stage Manager
Wesley Apfel*

Lighting Designer
Kurt Landisman
Prop Master
Joshua Lipps

Cast

Ben Bogen
Evan Boomer
Brittany Danielle*
Mark Farrell*

Catherine Gloria
Tim Homsley
Taylor Jones

Maureen McVerry*
Dyan McBride*
Tom Reardon
Sharon Rietkerk*

Directed by **Jeff Collister**
Musical Direction by **Brandon Adams**
Choreography by **Jennifer Perry**

XANADU
is presented through special arrangement with Music Theatre International (MTI).
All authorized performance materials are also supplied by MTI.
421 West 54th Street, New York, NY 10019
Phone: 212-541-4684 Fax: 212-397-4684
www.MTIShows.com

Margaret Lesher Theatre
May 18 - June 23, 2012
Lesher Center for the Arts

Season
Sponsor



Season Partner



Season Media Sponsor



Foundation Sponsor



*Member of Actors' Equity Association, the Union of Professional Actors and Stage Managers in the United States
The Lighting Designer and Sound Designer are members of United Scenic Artists Union
Center REP is a member of Theatre Bay Area and Theatre Communications Group (TCG), The National Organization for the American Theatre



CAST (in order of appearance)

Sonny..... Tim Homsley
Thalia..... Mark Farrell*
Euterpe..... Catherine Gloria
Erato..... Sharon Rietkerk*
Melpomene..... Dyan McBride*
Calliope..... Maureen McVerry*
Terpsicore.....Evan Boomer
Clio/KiraBrittany Danielle*
DannyTom Reardon
Swing Muse.....Ben Bogen
Swing Muse.....Taylor Jones

TIME and PLACE

Venice, California and Mount Olympus

This production is performed without an intermission.

THE SONGS

I'm Alive..... Clio and the Muses
Magic.....Kira
Evil Woman..... Melpomene, Calliope and the Sirens
Suddenly.....Kira and Sonny
Whenever You're Away From Me.....Danny and Kira
Dancin'.....Danny, Sonny and the Muses
Strange Magic..... Melpomene, Calliope, Kira, Sonny and Erato
All Over the World.....Sonny, Danny and the Muses
Don't Walk Away.....Sonny and the Muses
Fool..... Kira and the Muses
The Fall.....Sonny and the Muses
Suspended in Time..... Kira and Sonny
Have You Never Been Mellow..... Kira and the Greek Gods
Xanadu.....Kira, Sonny, Danny and the Muses

"Xanadu," "All Over the World," "The Fall," "I'm Alive," "Evil Woman," "Don't Walk Away" and "Strange Magic" written by Jeff Lynne, published by EMI Blackwood Music Inc.

"Magic" "Suddenly," "Dancin'" "Suspended in Time," "Whenever You're Away From Me," "Fool" and "Have You Never Been Mellow" written by John Farrar, published by John Farrar Music.

CAST BIOGRAPHIES

Evan Boomer (Terpsicore) is thrilled to be back with Center REP for this production of *Xanadu!* Recent credits include: "Hanschen" - *Spring Awakening* (Off Center), Peter Pinkerton - *Pinkalicious, the Musical* (Bay Area Children's Theater), "Young Scrooge" - *A Christmas Carol* (Center REP), *Little Shop of Horrors* (Contra Costa Musical Theatre), *Hysterium - A Funny Thing Happened On The Way To the Forum*, "Al DeLuca" - *A Chorus Line* (Contra Costa Musical Theatre) "The Waiter" - *She Loves Me* (Center REP). He is also a proud member of Fantasy Forum Actor's Ensemble. He holds a B.A. in Theatre Arts from California State University, East Bay, and has recently studied with Music Theatre Conservatory at Notre Dame de Namur. He hopes you enjoy the show!

Brittany Danielle* (Clio/Kira) is honored to be back with Center REP! Past REP credits: Ilona in *She Loves Me* (BATCC Award, Shellie Nomination), Brooke in *Noises Off* (Shellie Nomination), *Smokey Joe's Café*, and OFF Center's *Becoming Britney* (BATCC Award). Other favorite regional theatre: Amber Von Tussle in CCMT's *Hairspray*, Dorrie in 42nd Street Moon's US premiere of *Three Sisters*, Ulla in *The Producers* (Foothill Music Theater), Velma in *West Side Story* with American Idol's Diana DeGarmo and Bebe in *A Chorus Line* directed by original Broadway cast member Kay Cole. Having spent her childhood as a competitive USFSA figure skater, Brittany's dream has always been to "skate" on Broadway. She feels one step closer with this one! Thank you to Michael Butler for this amazing opportunity. This one's for Mom. www.BrittanyDanielle.com Proud AEA member.

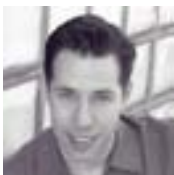
Mark Farrell* (Thalia) has appeared in over 60 productions in the Bay Area and beyond, and has been a member of Actors' Equity Association since 2002. Most recently seen in *Rumors*, Center REP audiences may also recognize him from *Noel & Gertie* (BATCC award), *Around the World in 80 Days*, *Laughter on the 23rd Floor*, *The Mousetrap*, *Musical of Musicals* (BATCC award), and *Witness for the Prosecution*. He's also appeared as his 10-year old, precocious self in Lil' Marky's Holiday Homeroom which he wrote and directed. Other credits include Machiavelli in *The Prince* (Central Works); *The Reduced Shakespeare Company's Complete Hollywood: Abridged* (Belgium/Holland Tour); *Loaded* (by Scott Capurro, Ars Nova Theatre, NYC); *Around the World in 80 Days* (Laguna Playhouse); *Putnam County Spelling Bee* (San Jose Repertory Theatre); *On the Town*, *Old Wicked Songs*, and *Splittin' the Raft* (Marin Theatre Company); *The Fantasticks* (BATCC award, SF Playhouse); *Chicago*, *Secret Garden*, and *Judgment at Nuremberg* (Willows Theatre). He is also the Executive Producer of the Long Day Short Film Festival (ldsf.tumblr.com). Next up, Mark will appear in *A Doll's House* at the Willows Theatre.

Catherine Gloria (Euterpe) is excited to make her debut performance with Center REPerity Company in this fun-filled production of *Xanadu*. Catherine recently completed the national tour of *The Magic School Bus: The Climate Challenge* (Maximum Entertainment) originating the role of "Wanda." Past credits include *Oliver!* ("Bet"), *Joseph and the Amazing Technicolor Dreamcoat* ("Narrator"), *You're A Good Man, Charlie Brown* ("Lucy Van Pelt"), and *Miss Saigon* ("Kim"). Huzzah to my Glorious family and B! www.catherinegloria.com

Tim Homsley (Sonny) Tim is so happy to be joining the Center REP family. Melchior *Spring Awakening* (Off Center), Chorus *The Pirates of Penzance* and *Willful* (Oregon Shakespeare Festival). Percy *The Scarlet Pimpernel* (Camelot Theater). Chip *25th Annual Putnam County Spelling Bee* (Oregon Cabaret Theater). Bobby Strong *Urinetown*, Jack Rover *Wild Oats*, White Night/Dee/Humpy Dumpty/Pudding *Alice Through the Looking Glass*, Gransaville *Dick Whittington and His Amazing Cat*, Privet Svensen *Johnny Johnson* (Southern Oregon University). BFA Southern Oregon University.

Dyan McBride* (Melpomene) works in the Bay Area as an actor/singer/director and educator. Other companies include: 42nd Street Moon, Sacramento Theatre Company, Marin Theatre Company, Ray of Light, Laguna Playhouse, Napa Rep, Broadway by the Bay, Pacific Coast Rep, Utah Musical Theatre, New Conservatory, CTA Crossroads, Mondavi Center, Solano College Theatre, Performance Riverside, as well as film/tv, print, web and voiceover work. BA- Cal. State Fullerton- Musical Theatre. MFA- UC Davis-Acting. Member of Screen Actors Guild/ American Federation of Television and Radio Artists (SAG/ AFTRA) and Actors Equity Association. Represented by Boom Models and Talent. Acting faculty at Solano College. Education Director at 42nd Street Moon.

Maureen McVerry (Calliope) returns to Center REP after her debut as Honey in their award winning production of *Bingo* in 2006. Regionally Miss McVerry has been onstage since 1981 and has had leading roles at SF Playhouse, Aurora Theatre, ACT, Theatreworks, 42nd St Moon, San Jose Rep and Stage, Marin Theatre Company, the Magic, the Marines Memorial Theatre, the Alcazar, the former Theatre on the Square and almost every space that has lights. Last fall she made her SF Directorial debut with *Oh Kay!* and it was a smash success. Her ever evolving cabaret show *Very McVerry* has been performed in SF, LA, Dallas, Marin and NYC. She is the recipient of several BAATC awards. Film work: *Big Business*, *The Dead Pool*, *Good Luck* (with the late Gregory Hines and Vincent D'onofrio), *True Believer*, *High Crimes* and on video, several made for TV movies, *Divorce Court* and *Full House*.



Tom Reardon (Danny) Tom's Bay Area credits include *White Christmas* (Bob), *Legally Blonde* (Callahan), *Curtains* (Cioffi) and *Peter Pan* (Hook/Darling) for DTC; *42nd Street* (Julian) for CCMT; *My Fair Lady* (Higgins) for Lamplighters; *Music Man* (Hill) and *Dirty Rotten Scoundrels* (Lawrence) for BBBay; *Finian's Rainbow* (Woody) for Woodminster; *Music Man* (Hill), *Little Shop of Horrors* (Orin), *Once Upon a Mattress* (Jester), *Bye Bye Birdie* (Albert), *My Way* (Man #1) and *Our Town* (Stage Manager) for TVRT; *Harvey* (Elwood), *Thoroughly Modern Millie* (Trevor), *Cocoonuts* and *Animal Crackers* (Chico), *Noises Off* (Gary/Roger) and *Anything Goes* (Billy) for CCCT; *Coco* (Papa) for 42nd Street Moon; and *Chicago* (Billy) for Pinole Players. He performs regularly with FFAE and on the local cabaret scene. Check out his website: www.tommyontherocks.com.

Sharon Rietkerk* (Erato) is delighted to return to Center REP where she last performed in *Rumors* and *She Loves Me*. She was most recently seen in concert with Faith Prince and Jason Graae in *Jerry Herman, The Best of Times*. Regional credits include *The Secret Garden* (Rose), TheatreWorks; *Nymph Errant* (Evangeline) and *Strike Up the Band* (Anne Draper), 42nd St Moon; Annie in *Evil Dead the Musical*, Willows Theatre Company. Other credits include *The Drowsy Chaperone* (Janet Van De Graaff), *White Christmas* (Judy Haynes), and *Curtains* (Niki), Diablo Theatre Company; *My Fair Lady* (Eliza Doolittle) and *Iolanthe* (Phyllis), Lamplighters Music Theater. Ms. Rietkerk has performed with the South Coast Symphony (*The Music Man*, Marian), the Napa Valley Opera House (*The Best of Gilbert and Sullivan*) and the Bear Valley Festival Orchestra. Ms. Rietkerk received a BA in Theater, with Honors in Musical Theater from the University of California, Irvine. Member of Actor's Equity.

Ben Bogen (Swing Muse) is elated to work with Center REP again after recently appearing in *Spring Awakening* (Georg) and two years of *A Christmas Carol* (Thief). Other credits: *Little Shop of Horrors* (Seymour u/s), *Hairspray* (Sketch), *A Chorus Line* (Mark), *RENT* (Steve/Waiter), *Oklahoma!*, *Oliver!*, and *Evita* with CCMT; and *Legally Blonde the Musical* and *Hello Dolly!* (DTC). Ben has been choreographing/directing for Standing Ovations theatre program for 4 years and this fall will be attending the University of Michigan for a B.F.A in musical theatre. Thank you to everyone for helping make my dreams come true.

Taylor Jones (Swing Muse) is so grateful to be a part of the Center REP family and so excited to perform with such a talented cast. Her recent credits include Wendla in *Spring Awakening* (Off Center), Pilar in *Legally Blonde* (DTC), Crystal in *Little Shop of Horrors*, Mimi in *Rent* (CCMT) and Brenda in *Smokey Joe's Café* (Center REP). She'd like to send lots of love to her family and friends for all of their support!



THANK YOU TO OUR
OPENING NIGHT DINNER SPONSORS:
Fleming's Prime Steakhouse & Wine Bar
Oi-C Bowl
Scott's Seafood Grill and Restaurant

CREATIVE TEAM

Douglas Carter Beane (Playwright) Plays: *The Little Dog Laughed* (GLAAD Media Award), *As Bees in Honey Drown* (Outer Critics Circle Gassner Award), *Music From a Sparkling Planet*, *The Country Club*, *Advice From a Caterpillar*, *The Cartells* and the upcoming *Mister and Missus Fitch*. Musicals: *Sister Act*, *Lysistrata Jones* and *The Bandwagon*. Revues: *Mondo Drama* and *White Lies*. Screenplays: *Advice From a Caterpillar* (Aspen Comedy Festival Best Feature); *To Wong Foo, Thanks for Everything! Julie Newmar*. As Artistic Director of the Drama Dept., he produced more than 40 productions including revivals of *As Thousands Cheer*, *June Moon* and *The Torchbearers* and world premieres by Paul Rudnick, David Sedaris and Wendy Wasserstein. He resides in NYC with his partner, Lewis Flinn, and their children Cooper and Gabrielle.

Jeff Lynne (Composer/Lyricist) formed the Electric Light Orchestra, or E.L.O., in the 1970's. The group gradually developed from cult favorites into one of the 70s' leading recording acts, scoring international success with several platinum-selling albums, including "A New World Record" and "Out Of The Blue". Lynne's dual talents as a composer and producer ensured the group's status but, sensing an artistic sterility, he abandoned his creation in 1986. The artist then assumed an increasingly backroom role, but won praise for his production work with George Harrison ("Cloud Nine"), Randy Newman ("Land Of Dreams") and Roy Orbison ("Mystery Girl") and he has also contributed his distinctive production qualities to much of Tom Petty's recent output. Lynne's work with Orbison coincided with his position as 'Otis Wilbury' in the Traveling Wilburys, an informal 'supergroup' completed by Orbison, Harrison, Tom Petty and Bob Dylan. This particularly prolific period was also marked by his work with Brian Wilson on the ex-Beach Boys' first long-awaited solo album. In recent years, Lynne has produced the Beatles lost tapes, notably "Free as a Bird" and "Real Love". He co-produced Paul McCartney's "Flaming Pie" in 1997.

John Farrar (Composer/Lyricist) left Australia in 1970 at the invitation of the legendary English group The Shadows; they recorded six albums together. During a break he began working with Olivia Newton-John. He went on to produce 14 albums for her. After winning a Grammy (Record of the Year) for "I Honestly Love You," he moved to L.A. where he wrote and produced many of her hits: "Have You Never Been Mellow?," "Hopelessly Devoted to You" (Academy Award nom.), you're the One That I Want" (golden Globe nom.), "Don't Stop Believing" "A Little More Love," "Magic," "Suddenly," "Sam," "Make a Move on Me." He also produced the mega-hit "Physical." In 1995 he co-wrote with Tim Rice the songs for the Cliff Richard musical *Heathcliff*. He co-wrote with Francis Ford Coppola the songs for a new musical, *Gidget*.

Jeff Collister (Director) is thrilled to be working with REP on this zany project. Prior to this Jeff directed CCMT's *Urinetown - The Musical* and the classic musical comedy, *Grease*. Sometime in the mid 80's, when Jeff was in his early 20's, he directed CCMT's production of *Godspell* at the old Stage II theatre, which is now Skipolini's Pizza. Jeff has worked with many of the theatre companies in the area as an actor, director, lighting designer, and most frequently as the Stage Manager. During the day (and many nights) Jeff works as Production Manager for Center REP. He recently managed his 100th production with REP. Jeff has Stage Managed nearly 50 productions since starting with REP in 1989. Favorites include, *Boeing-Boeing*, *A Number*, *Almost Heaven*; *John Denver's America*, *Becoming Memories*, *Suds: The Rockin' 60's Musical Soap Opera*, *Godspell*, *The Mystery Of Edwin Drood*, and numerous productions of *A Christmas Carol*. Jeff worked as Production Stage Manager for *Dame Edna - The Royal Tour* in San Francisco. He is a Shellie Award winning actor and a member of Actors Equity Association. Jeff is an avid Giants fan and is looking forward to another championship season!

Brandon Adams (Musical Director) is thrilled to be working on this production of *Xanadu*. He has MD'ed three Bay Area premiers: Jason Robert Brown's *Last Five Years* at Playhouse West, David Henry Hwang's revised version of *Flower Drum Song* at Woodminster Summer Musicals, and *Musical of Musicals, the Musical!* (BATTC award) at Center REP. Favorite credits include: *Funny Girl*, *Girl Crazy*, *Me and My Girl*, *Too Many Girls*, and *Something for the Boys*. Recently, he has worked on *She Loves Me* at Center REP (Shellie and BATTC awards) and *Oh, Kay!* at *42nd Street Moon*.

Jennifer Perry (Choreographer) is the Director and Owner of Lareen Fender's The Ballet School Performing Arts on Main Street in Walnut Creek home of The Ballet Joyeux and Performing Arts STUDIO. Jennifer studied ballet and trained with her grandmother, Lareen Fender. She has won Shellie Awards for her Direction, Choreography and as an Actress in a Musical. Jennifer has been recognized by the Arts Endowment Foundation for her service in the arts and by the Bay Area Theatre Critics Circle Awards for her work as a Director, Choreographer and Actress. Favorite Choreography credits include: *Hairspray* (Shellie Award and BATCCA) *A Chorus Line* (BATCCA) *Cinderella* (Shellie Award) *Disney's Beauty and The Beast* (Shellie Nominee), *TITANIC*, and *Sound Of Music*. Favorite Directing credits include: *A Chorus Line*, *OKLAHOMA!* (Shellie Award and BATCCA), *42nd Street*, and *Guys and Dolls* all for Contra Costa Musical Theatre. Jennifer is a proud member of Fantasy Forum Actor's Ensemble and is thrilled to be going into her 17th year of teaching for Center REP's Young REP Acting Training Program, where she serves as co-director of the Musical Theatre Program. Jennifer is the Casting Director for Center REP where she is going into her 4th Season. www.theballetschool.org

Kelly Tighe (Scenic Designer) Set Design). New York: *Heat Wave*; *The Jack Cole Project*, *The Fantasticks*, *Almost Heaven*, *Blanche Survives Katrina In A Fema Trailer Named Desire*, *The Time of Mendel's Trouble*. Vegas: *Triumph* at the Las Vegas Hilton. National tours: *Shear Madness*, *Cats*, *Movin' Out*, *Almost Heaven*, *Mooseltoe*. Regional: *Dreamgirls*, *My Way*, *Aida*, *The Full Monty*, *Jesus Christ Superstar* (Gateway Playhouse); *Beauty/Beast*, *Grease*, *Titanic*, *The Who's Tommy*, (Contra Costa Musical Theatre); *Annie*, *Kiss Me Kate*, *Joseph/ Dreamcoat* (Ohio's Carousel Dinner Theater); *West Side Story*, *The Scarlet Pimpernel* (Diablo Light Opera Co.); *Around the World In 80 Days*, *The Pavilion*, *Picasso* at the *Lapin Agile*, *A Christmas Carol* (Center REPerity Co.). Mr. Tighe served as resident Scenic designer for Michigan's Cherry County Playhouse, and Center REP. Television: *Sunday Night Woah!* (starring Mo Rocca) for Animal Planet, several spots for Verizon, Kit Kat, Disney, and the Oxygen network. Awards and recognitions: Northern California's "Shellie", Drama-Logue, and the S.F. Bay Area's Critic's Circle.

Victoria Livingston-Hall (Costume Designer) Work at Center REP includes, *Arms and the Man*, *Smokey Joe's Café*, *Boeing Boeing*, *She Loves Me* (Shellie Award and BATCC Award), *Dracula*, *Noises Off*, *Witness for the Prosecution*, and *Cabaret* (Shellie Award and BATCC Award). Victoria has a diverse background in design including industrial design, interior design, scenic and costume design. Costuming has been her focus for the last six years here and abroad. Her work in London includes, *The Long Hard Goodbye* - film, *Olympia* at the Baron's Court Theatre, *S.N.U.B.*- feature film-Angry Badger Pictures, *Striklem*, The National Film and Television School, British Society of Cinematographers *BSC Test Shoot*, *Viv* Skillset Screen Academy, *Midsummer Murders* for Virgin Media and she assisted at the Holland Park Opera productions of *Lakme* and *La Traviata*. Bay area work includes the *A Seagull in the Hamptons* for Shotgun Players, the *ReOrient Festival* for Golden Thread Productions, *Abe Lincoln's Big Gay Dance Party* for SF Playhouse and the NYFringe Festival, among other shows for Crowded Fire Theatre Co. The Magic Theatre, and Theatre Artaud.

Kurt Landisman (Lighting Designer) Local audiences will be familiar with his work through past productions designed for Center REP including *Arms and the Man*, *Blues in the Night*, *Dracula*, *She Loves Me*, *Noises Off*, *All Shook Up*, *Cabaret*, *Ain't Misbehavin'*, *Musical of Musicals (The Musical!)*, *A Midsummer Night's Dream*, *The Mousetrap*, *How the Other Half Loves*, *Around the World in 80 Days*, and *Fugitive Kind*. His designs have been seen throughout the Bay Area at many theaters including San Francisco Opera, ACT, Berkeley Rep, San Jose Rep, Theatreworks, California Shakespeare Festival, The Magic Theatre, and Marin Theatre Company. Locally his work has garnered 16 Bay Area Critics Circle Awards, 5 LA Dramalogue Awards and 4 Shellie Awards. Nationally, his work has been seen at many

regional opera & ballet companies, including the Los Angeles Opera, Minnesota Opera, Virginia Opera, Tulsa Opera, and Ballet Arizona. His designs have also been presented off-Broadway, represented at Circle Rep, and the Douglas Fairbanks Theatres. Other designs internationally include world premieres of plays by Sam Shepard in Japan, and Singapore, as well as the San Francisco Opera in Shanghai, China, and the Moscow Circus in Tokyo, Japan.

Jeff Mockus (Sound Designer) has produced music and sound for Bay Area theatre for 25 years, including Center REP's *A Christmas Carol*, *A Marvelous Party*, *Cabaret*, *Ain't Misbehavin'*, *Musical of Musicals: The Musical!*, *Hank Williams Lost Highway*, *Around the World In 80 Days*, and *The Marriage of Figaro*. Among his recent work are TheatreWorks' *Of Mice and Men*, *The Secret Garden*, *Fly By Night*, *Superior Donuts* and [title of show], American Conservatory Theater's *Clybourne Park*, *War Music*, *The Rainmaker*, and *The Circle*, and California Shakespeare Theatre's *Mrs. Warren's Profession*, *Uncle Vanya*, *Private Lives*, *An Ideal Husband*, and *Pericles*. Mr. Mockus contributed original music to the west coast premiere of *Legacy of Light*, which marked his 70th production for San Jose Repertory Theatre, where he has received Bay Area Theatre Critics Circle Awards for *Old Wicked Songs* and *Mary's Wedding*, and Dean Goodman Choice Awards for *By The Bog of Cats*, *ART*, and *Major Barbara*.

Judy Disbrow (Wig Designer) and her company Theatrical Hairgoods have provided wigs for theatrical productions for over 30 years. She has worked with companies throughout the United States including Diablo Theatre Company, CCMT, La Jolla Playhouse, Arkansas Repertory Theatre, San Francisco Opera, Portland Opera, Florida Grand Opera, as well as many others.

Wesley Apfel* (Stage Manager) is thrilled to be working with Center REP on this production! Recently: *Night Over Erzinga* (Golden Thread), *A Christmas Carol* (STC), *Once in a Million Moons* (42nd Street Moon). Other favorite credits include: *The Boys From Syracuse*, *The Graduate*, *Festen* (Broadway); *Mother Courage and Her Children* (with Meryl Streep); *On the Town*, 1776, *Kiss Me Kate* (Paper Mill Playhouse); *Art*, *See Rock City and Other Destinations* (Barrington Stage); *Carousel* (Carnegie Hall, with Hugh Jackman and Audra MacDonald); the original NY productions of *Gutenberg the Musical!*, *Bat Boy*, *The Musical of Musicals*, *Little Fish*, *Cycling Past the Matterhorn*, and *The Thing About Men*. Production Supervisor and five years as Stage Manager for the SPF Summer Play Festival.

Joshua Lipps (Prop Master) has been with Center REP since 2009 as their Technical Director. Mr. Lipps has been in the arts for more than a decade. Some other theater houses that he has worked for are Alameda Civic Light Opera, Stagemasters, and the Educational Theater Company of Foster City. He very much enjoys dressing the set he and his scene shop have built. Joshua would like to take this opportunity to thank his wonderful crew for their skills and dedication, for without them we would have a blank slate. Past productions in which Joshua has been Props Master include *The Storytelling Ability of a Boy*, *Blues in the Night*, *Smokey Joe's Café* and *Spring Awakening*. When Joshua is not in the theater world he enjoys spending time with his beautiful wife Jennifer and 2 yr old son Carter. Joshua appreciates the opportunity to work with Center REP's wonderful technical and artistic staff, they are his second family!

Joe Coe (Assistant Stage Manager) This is Joe's fourth season with Center REP and he couldn't be happier to be a part of such an amazing team of professionals and friends! Joe has had the pleasure of working with such companies as Berkeley Repertory Theatre, American Conservatory Theatre, Summer Repertory Theatre, Suicide Kings touring production of *In Spite of Everything*, Boston Conservatory, SpeakEasy Stage Company, and Jose Mateo Ballet Theatre. Joe would like to thank all of his colleagues here at the LCA for a great season and for making it such a joy to work here!

Alex Logemann (Deck Manager) is celebrating his 33rd show backstage with Center REP. Alex has been backstage for ten seasons and is beyond pleased to be involved with such an amazing group. Alex has also crewed shows for Contra Costa Musical Theatre and with Diablo Theatre Company. Alex is a proud member of the Fantasy Forum Actors Ensemble. He is very thankful for our community and the fun it provides. "The day you catch an idea you fall in love with, even a small one, is a beautiful day." -David Lynch

Michael Butler (Artistic Director) This is Michael's sixth season as Artistic Director of Center REP, where his directing credits include last season's *Dracula*, *Boeing-Boeing* and *To Kill a Mockingbird*, as well as the Shellie and/or BATCC Award-winning productions of *Around the World in 80 Days*, *Picasso at the Lapin Agile*, *The Marriage of Figaro*, *How the Other Half Loves*, *A Midsummer Night's Dream*, *Enchanted April*, and *Witness For The Prosecution*. His directing work has also been seen at San Jose Rep, Cleveland Playhouse, Seattle Rep, Laguna Playhouse, ACT in Seattle, Marin Theatre Company, Aurora Theatre Company, San Jose Stage, Shakespeare Santa Cruz, and The Juilliard School, of which he is a graduate. As an actor, Michael has worked on Broadway and off, in regional theatres, film and television, as well as REP's productions of *The Mousetrap*, *Noises Off* and *Rumors*. He is a published songwriter and the co-writer and composer of numerous music-theatre pieces, which he has directed and performed in NY, LA, and at festivals in India and Morocco. In his career as a performer he has also danced with the Erick Hawkins Dance Company, portrayed the villainous Pierre LeChance on *The Guiding Light*, and played guitar and harmonica in many rock, blues, and country western bands at all the notable dives in NYC.

Scott Denison (Managing Director) has been a leader in the Arts for 37 years for Walnut Creek and the surrounding communities. Under Denison's guidance for the last 21 years as General Manager for the Leshes Center for the Arts, he oversees over 850 public events each year. He coordinates performing arts activities with over 85 producers and producing organizations. He is also the Managing Director of the Center REPeritory Company producing 8 professional productions each season; and is the director and co-founder of Fantasy Forum Actors Ensemble, an adult family performing arts company which presents programs for the young and Young at Heart. Scott directed CCMT's hits *Disney's Beauty and the Beast* and *Rogers and Hammerstein's Cinderella*, *Hairspray*, and for the past 13 seasons Center REP's *A Christmas Carol*. Denison has directed over 150 productions including most recently REP's *The Lady with all the Answers* starring Kerri Shawn. In 1979 he created the Shellie Awards, which annually honors outstanding performing arts achievement in Contra Costa County. In 2007 he created the Chevron Family Theatre Festival bringing adult nationally acclaimed performances together for one day performing to over 7,000 guests of all ages.

OUR SPONSORS

Chevron (Season Sponsor) has been the leading corporate sponsor of Center REP and the Leshes Center for the Arts for the past eight years. In fact, Chevron has been a partner of the LCA since the beginning, providing funding for capital improvements, event sponsorships and more. Chevron generously supports every Center REP show throughout the season, and is the primary sponsor for events including the Chevron Family Theatre Festival in July. Chevron has proven itself not just as a generous supporter, but also a valued friend of the arts.

Diablo Regional Arts Association (DRAA) (Season Partner) is both the primary fundraising organization of the Leshes Center for the Arts (LCA) and the City of Walnut Creek's appointed curator for the LCA's audience outreach. DRAA's role in the community is all about building partnerships with the focused goal of enhancing artistic quality at the LCA and providing opportunities for everyone to enjoy the arts. Through partnerships with the LCA and its producers, individual donors, corporate and foundation sponsors and the City of Walnut Creek, DRAA plays a vital role in advancing the arts for the betterment of the community. Please visit us online at www.draa.org.

Contra Costa Times (Season Media Sponsor) In the East Bay, the largest newspaper of the Bay Area News Group is the Contra Costa Times and its sister editions, the West County Times, Valley Times, San Ramon Valley Times and East County Times. The Times, was judged the best newspaper in its circulation category in the state five times in a six-year period by the California Newspaper Publishers Association. In 2005, it won the prestigious national Freedom of Information Award from Associated Press Managing Editors. And, in 2007, it was honored by the California Newspaper Publishers Association for its leadership on public records.

Leshes Foundation (Foundation Sponsor) Since 1994, the Dean & Margaret Leshes Foundation has awarded grants totaling more than \$40 million and reaching citizens in all parts of Contra Costa County. True to the original wishes of Dean and Margaret Leshes, the Foundation continues to build on the strengths of the community by supporting organizations and programs that provide help and support to people in need; enhance and enrich the lives of all citizens; and promote a healthy and exciting future for the community. Established in 1989, the Foundation received its principal assets from Dean Leshes's estate in 1993 and 1995. In 1997, an additional endowment from Dean Leshes's estate followed the death of Margaret Leshes. A significant and final bequest from Mr. Leshes's estate was received in 2003. As a family foundation, support for the Contra Costa community will be carried on by the next generation of family members. Grant-making decisions are based on the vision of Dean and Margaret Leshes who felt quality education, diverse art programs, and healthy children and families are the building blocks of a strong and vibrant community. The Leshes defined the "spirit of giving" as "investing in the community and its people." By providing financial support and direction in these critical areas, the Dean & Margaret Leshes Foundation is investing every day, every week and every year in the health and well-being of this county that Dean and Margaret so loved.

<p>CITY COUNCIL Bob Simmons, Mayor Kristina Lawson Kish Rajan Cindy Silva Gary Skrel</p>	 <p>ARTS COMMISSION Carol Fowler, Chair Joe Bologna, Vice Chair Polly Bradbury Glynnis Cowdery Jane Emanuel</p>
<p>CITY MANAGER Ken Nordhoff DIRECTOR Arts, Recreation and Community Services Barry Gordon</p>	

ADDITIONAL THANKS TO:
 Massimo's Ristorante
 Walnut Creek Baking Company
 Waters Moving and Storage
 Associated Services-Alta Water
 Shannon and Mike Demers
 Hyatt Summerfield Suites
 Contra Costa Musical Theatre
 Patty Rogers - tans-on.com

ABOUT CENTER REPERTORY COMPANY

Center REP is the resident, professional theatre company of the Leshes Center for the Arts. Our season consists of eight productions a year – a variety of musicals, dramas and comedies, both classic and contemporary, that continually strive to reach new levels of artistic excellence and professional standards.

Our **mission** is to celebrate the power of the human imagination by producing emotionally engaging, intellectually involving, and visually astonishing live theatre, and through Outreach and Education programs, to enrich and advance the cultural life of the communities we serve.

What does it mean to be a producing theatre? We hire the finest professional directors, actors and designers to create our productions at Center REP. These are not touring productions – they're conceived and developed here, the sets and costumes are built in our shops, and the actors rehearse in our rehearsal hall. Whether the production is a Bay Area premiere or a Shakespearean classic, each is devised to be a one of a kind, artistic creation that will be a unique theatre experience for our audience.

What does it mean to be a professional theatre? It means that all our artists and artisans are career theatre-practitioners. Many of the actors in this production are members of Actors' Equity Association; many of our directors and designers are members of professional unions. All do theatre because it is their profession and their passion.

We are very proud to have the opportunity to produce professional theatre for our community in the beautiful theatres here at the Leshes Center for the Arts. Thank you for your support!

 <h3>Center REPeritory Company</h3> <p>Managing Director - Scott Denison Artistic Director - Michael Butler</p>	
<p><i>Production Services</i> Production Svcs Coordinator Toni Kilcoyne Technical Staff Steve Pino John Earls Michael Arlen Devon Ausman Chris Currie Mitch Kell Garrick Schuster Stephen Spleiss Josh Stouffer</p> <p><i>Marketing</i> Marketing Director Gabe Marin Marketing Assistant Ariel Ford</p> <p><i>Audience Services</i> Audience Svcs Coordinator Courtney Egg Ticket Office Staff Jeremiah Dierling Caitlin Downing Hillary Pearsall Colleen Hillstead Kiersten Jones Karla Kopffhammer Britt Lauer Benjamin Potter Sadé Robinson Andrea Toney Usher Coordinator Jason Pedroza</p>	<p><i>Production</i> Production Manager Jeff Collister <i>Technical</i> Technical Director Joshua Lipps Master Electrician Ray Oppenheimer Carpenters Daniel Casini Jordan Scott Cameron Swartzell Chris Swartzell Assistant Stage Manager Joe Coe Deck Manager Alex Logemann <i>Costumes</i> Costume Manager Michael A. Berg Assistant Costumers Max Hilsabeck Matthew O'Connor <i>Education</i> Education Directors Jeff Draper Kerri Shawn Casting Director Jennifer Perry <i>Administration</i> Asst. to Managing Director Gail Pfeifer Program Linda Nomura</p>

 <p>Xana-Crew Ali Arman Jody Cook Amanda Denison Chris Homburger Sarah Leahy Kourtney McCrary Claire McMahon Derek Miller Alaina Moore Trevor Owen Jason Pedroza Grant Strain Cyle Swanstrom Kelly Tighe Alison Valentine John Valentine Kyle Valentine</p>	<p>Xana-Band Musical Director – Keyboard – Brandon Adams Guitar – John Imholz Drums – Erika Johnson Keyboard – Kim Vetterli</p>
--	--