

Alex Logemann (Deck Manager) is celebrating his 41st show backstage with Center REP. Alex has been backstage for ten seasons and is beyond pleased to be involved with such an amazing group. Alex has also worked backstage for Contra Costa Musical Theatre and with Diablo Theatre Company. Alex is a proud member of the Fantasy Forum Actors Ensemble. He is very thankful for our community and the fun it provides. "Opportunity is missed by most people because it is dressed in overalls and looks like work." -Thomas Edison

Scott Denison (Managing Director) has been a leader in the Arts for 40 years for Walnut Creek and the surrounding communities. Under Denison's guidance for the last 23 years as General Manager for the Leshner Center for the Arts, he oversees over 850 public events each year. He coordinates performing arts activities with over 85 producers and producing organizations. He is also the Managing Director of the Center REPeritory Company producing 7 professional productions each season; and is the director and co-founder of Fantasy Forum Actors Ensemble, an adult family performing arts company which presents programs for the young and Young at Heart. Scott directed CCMT's hits *Disney's Beauty and the Beast*, *Rodgers and Hammerstein's Cinderella*, *Hairspray*, and for the past 13 seasons Center REP's *A Christmas Carol*. Denison has directed over 150 productions including REP's *The Lady with All the Answers* starring Kerri Shawn. This spring, he will direct *Les Misérables*. In 1979 he created the Shellie Awards, which annually honors outstanding performing arts achievement in Contra Costa county. In 2007 he created the Chevron Family Theatre Festival bringing adult nationally acclaimed performances together for one day performing to over 7,000 guests of all ages.

OUR SPONSORS

Chevron (Season Sponsor) has been the leading corporate sponsor of Center REP and the Leshner Center for the Arts for the past nine years. In fact, Chevron has been a partner of the LCA since the beginning, providing funding for capital improvements, event sponsorships and more. Chevron generously supports every Center REP show throughout the season, and is the primary sponsor for events including the Chevron Family Theatre Festival in July. Chevron has proven itself not just as a generous supporter, but also a valued friend of the arts.

Diablo Regional Arts Association (DRAA) (Season Partner) is both the primary fundraising organization of the Leshner Center for the Arts (LCA) and the City of Walnut Creek's appointed curator for the LCA's audience outreach. DRAA's role in the community is all about building partnerships with the focused goal of enhancing artistic quality at the LCA and providing opportunities for everyone to enjoy the arts. Through partnerships with the LCA and its producers, individual donors, corporate and foundation sponsors and the City of Walnut Creek, DRAA plays a vital role in advancing the arts for the betterment of the community. Please visit us online at www.draa.org.

Leshner Foundation (Foundation Sponsor) Since 1994, the Dean & Margaret Leshner Foundation has awarded grants totaling more than \$40 million and reaching citizens in all parts of Contra Costa County. True to the original wishes of Dean and Margaret Leshner, the Foundation continues to build on the strengths of the community by supporting organizations and programs that provide help and support to people in need; enhance and enrich the lives of all citizens; and promote a healthy and exciting future for the community. Established in 1989, the Foundation received its principal assets from Dean Leshner's

estate in 1993 and 1995. In 1997, an additional endowment from Dean Leshner's estate followed the death of Margaret Leshner. A significant and final bequest from Mr. Leshner's estate was received in 2003. As a family foundation, support for the Contra Costa community will be carried on by the next generation of family members. Grant-making decisions are based on the vision of Dean and Margaret Leshner who felt quality education, diverse art programs, and healthy children and families are the building blocks of a strong and vibrant community. The Leshners defined the "spirit of giving" as "investing in the community and its people." By providing financial support and direction in these critical areas, the Dean & Margaret Leshner Foundation is investing every day, every week and every year in the health and well-being of this county that Dean and Margaret so loved.

ABOUT CENTER REPERTORY COMPANY

Center REP is the resident, professional theatre company of the Leshner Center for the Arts. Our season consists of seven productions a year – a variety of musicals, dramas and comedies, both classic and contemporary, that continually strive to reach new levels of artistic excellence and professional standards.

Our **mission** is to celebrate the power of the human imagination by producing emotionally engaging, intellectually involving, and visually astonishing live theatre, and through Outreach and Education programs, to enrich and advance the cultural life of the communities we serve.

What does it mean to be a producing theatre? We hire the finest professional directors, actors and designers to create our productions at Center REP. These are not touring productions – they're conceived and developed here, the sets and costumes are built in our shops, and the actors rehearse in our rehearsal hall. Whether the production is a Bay Area premiere or a Shakespearean classic, each is devised to be a one of a kind, artistic creation that will be a unique theatre experience for our audience.

What does it mean to be a professional theatre? It means that all our artists and artisans are career theatre-practitioners. Many of the actors in this production are members of Actors' Equity Association; many of our directors and designers are members of professional unions. All do theatre because it is their profession and their passion.

We are very proud to have the opportunity to produce professional theatre for our community in the beautiful theatres here at the Leshner Center for the Arts. Thank you for your support!

**CITY OF NEIGHBORHOODS
A History of Racial Division in Chicago**

EARLY IMMIGRATION (1840s-1910s)
Chicago in the 19th century was a city of immigrants - Germans, Poles and Ukrainians to the northwest, Italians to the west, Jews and Czechs to the southwest, and Irish to the south.

THE BUNGALOW BELT (1910-30)
Developers built some 100,000 bungalows in a semicircle surrounding the downtown core and formed early immigrant neighborhoods.

THE GREAT MIGRATION (1900-40)
Chicago's African American population grew from 20,000 in 1900 to nearly 300,000 in 1940.

RESTRICTIVE COVENANTS (1926-48)
Legally binding contracts were signed by homeowners and landlords in white neighborhoods who agreed not to rent or sell to blacks; they were most popular in the Bungalow Belt.

SECOND GREAT MIGRATION (1940s-60s)
Chicago's black population nearly tripled from 278,000 to 813,000, placing even greater strain on the already crowded housing market.

WHITE FLIGHT TO THE OUTER SUBURBS (1950s-70s)
Between 1950 and 1956 alone, nearly 300,000 white Chicagoans moved to the outer suburbs.


EXPRESSWAYS AND THE CAR CULTURE (1950s-60s)
Chicago's expressway boom came at the expense of its once-extensive streetcar system, which was completely dismantled in the '50s, reducing the mobility of inner-city residents.

HIGH-RISE HOUSING PROJECTS (1950s-90s)
The city bulldozed some 50,000 housing units-home to 200,000 people -between 1950 and 1961. Many African Americans, were funneled into newly built high-rise housing projects. Few businesses or community spaces were built to serve the new high-rises, and conditions soon became inhospitable.

THE DECLINE OF THE INNER CITY (1970s-90s)
Chicago had lost a portion of its residential and commercial tax base to the suburbs, and the city's government struggled to fund its school system and social programs. In 1987, the federal government named Chicago's schools the worst in the country.

GENTRIFICATION (1990s to PRESENT)
Rising gas prices and lengthy commutes have made suburban life seem less desirable to many Chicagoans over the past tow decades, and since the 1990s suburban whites have begun to move back to the inner city.


CITY COUNCIL Kristina Lawson , Mayor Bob Simmons , Mayor Pro-Tem Loella Haskew Cindy Silva Justin Wedel	
CITY MANAGER Ken Nordhoff	ARTS COMMISSION Joe Bologna , Chair Jane Emanuel , Vice Chair Polly Bradbury Glynnis Cowdery Carol Fowler
DIRECTOR Arts, Recreation and Community Services Kevin Safine	



CENTER REPERTORY COMPANY

Michael Butler, Artistic Director **Scott Denison, Managing Director**

presents



By

Bruce Norris

Scenic Designer
J. B. Wilson

Sound Designer
Lyle Barrere

Wigs
Judy Disbrow

Lighting Designer
Kurt Landisman

Stage Manager
David A. Young*

Costume Designer
Elizabeth Poindexter

Props Manager
Madison Genovese

Dramaturgy
Timothy Near

Cast

Velina Brown*
Lynda DiVito

Richard Howard*
Craig Marker*
Kendra Lee Oberhauser*

Timothy Redmond
Adrian N. Roberts*


Directed by **Michael Butler**

CLYBOURNE PARK was produced on Broadway by Jujamcyn Theaters at The Walter Kerr Theatre, 2012.


Playwrights Horizons, Inc., New York City, produced the World Premiere of CLYBOURNE PARK Off-Broadway in 2010.

Margaret Leshner Theatre
January 31 - March 1, 2014
Leshner Center for the Arts


Season Sponsor




Season Partner



Foundation Sponsor





*Member of Actors' Equity Association, the Union of Professional Actors and Stage Managers in the United States
The Director of this production is a member of the Stage Directors and Choreographers Society
The Scenic and Lighting Designers are members of United Scenic Artists Union
Center REP is a member of Theatre Bay Area and Theatre Communications Group (TCG), The National Organization for the American Theatre

CAST (in order of appearance)

Bev/Kathy.....Lynda DiVito
 Russ/Dan.....Richard Howard*
 Francine/Lena.....Velina Brown*
 Jim/Tom/Kenneth.....Timothy Redmond
 Albert/Kevin.....Adrian N. Roberts*
 Karl/Steve.....Craig Marker*
 Betsy/Lindsey.....Kendra Lee Oberhauser*

TIME and PLACE

Act One: 1959; Act Two: 2009
 North Chicago

There will be one intermission.

CAST BIOGRAPHIES

Velina Brown* (Francine/Lena) is pleased to make her Center REP debut with such a wonderful cast in this important play. She is an award winning actress, singer/songwriter, and co artistic director of the San Francisco Mime Troupe. You may have also seen her at the American Conservatory Theatre, Berkeley Repertory Theatre, The Magic Theatre, Theatre Rhino, TheatreWorks, Shotgun Players, SF Playhouse, Symmetry Theatre, The Lorraine Hansberry Theatre and The Denver Theatre Center among many others. She has appeared on television shows such as *Final Witness*, *Party of Five*, *Nash Bridges* and *Trauma* and in films such as *Bee Season*, *Maladaptive*, *One Way to Valhalla* and *Milk*. You can read Velina's monthly advice column in Theatre Bay Area Magazine and on TBA's website named after her coaching practice for actors called The Business of Show Biz. For more info please visit www.velinabrown.com Here's to honoring history and community.

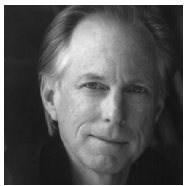


Lynda DiVito (Bev/Kathy) is thrilled to be back at Center REP in *Clybourne Park*. Other Center REP shows include: *Lucky Stiff*, *Status Update*, *Rumors*, *Boeing Boeing*, *She Loves Me* and *All Shook Up*. Regional credits include, *Hairspray* at CCMT, *Legally Blonde* at DTC, *Full Monty* at AMTSJ. International and NYC credits include; *CATS*/Jellylorum, *Off Bway*; *Sheba*, *the Musical*. *Oliver* at Papermill Playhouse. Lynda was the lead singer for one of Amsterdam's hottest dance bands, JamSquare and was the opening act for the 'Weather Girls' in Koln, Germany. Lynda holds a degree in theatre from SFSU. Many thanks to Michael Butler and the Center REP family. Look for Lynda in Center REP's upcoming show, *The Real Housewives of Walnut Creek*. For L&H&N, the loves of my life.

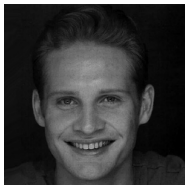


THANK YOU TO OUR OPENING NIGHT DINNER SPONSORS:
 Fleming's Prime Steakhouse & Wine Bar
 Oi-C Bowl
 Scott's Seafood Grill and Restaurant

Richard Howard* (Russ/Dan) has been a Company Member at the Oregon Shakespeare Festival for the last 26 years where he has played such leading roles as Romeo, Hamlet, Richard II, Pericles, Henry IV, Angelo in *Measure for Measure*, Shannon in *The Night of the Iguana*, Walter Griffin in *UP*, roles in *The Servant of Two Masters*, *Throne of Blood*, *Room Service*, *Noises Off*, *Pentecost*, *Arcadia*, *The Three Musketeers* and others. He has appeared On Broadway in *Execution of Justice*, Off Broadway in *Ten by Tennessee*, regionally at Arena Stage, The Arizona Theatre and several seasons as a company member at the Guthrie Theatre. He was seen most recently at Berkeley Rep in Mary Zimmerman's *The White Snake* and will follow that production to The Goodman Theatre in Chicago in the Spring. He studied at The Juilliard School with friend Michael Butler, and is so happy to be working with him on this brilliant play.



Craig Marker* (Karl/Steve) returns to Center REP having performed in productions of *Arms and the Man*, *The Mousetrap*, and *The Marriage of Figaro*. Regionally, Mr. Marker has performed for Portland Center Stage, La Jolla Playhouse, Berkeley Repertory Theatre, American Conservatory Theatre, San Jose Repertory Theatre, Aurora Theatre Company, California Shakespeare Theater, TheatreWorks, San Francisco Shakespeare Festival, and SF Playhouse. His Bay Area credits have included playing Iago in *Othello*, Jim in *Glass Menagerie*, and Trigorin in *Seagull* at Marin Theatre Company; Henry in *Henry V* at San Francisco Shakespeare Festival; and the title role in *Macbeth* at Shotgun Players. Mr. Marker originated the role of Daniel Reeves in Bill Cain's Award-Winning play, *9 Circles*, at Marin Theatre Company.



Kendra Lee Oberhauser* (Betsy/Lindsey) is delighted to return to the Center REP stage where she was last seen in *Arms and the Man* (Louka), *Dracula* (Mina Murray), *Noises Off* (Poppy) and *The Women* (various). Recent credits include: *QED* with Indra's Net, *A Doll's House* at the Willows Theatre, *Down to This* at Sleepwalkers Theatre, *Reduction in Force* and *Blastosphere* at Central Works, *Twelfth Night* at Town Hall Theatre, *The Norman Conquests* trilogy at Shotgun Players and *See How We Are* at Impact Theatre. She has also worked at Berkeley Rep, SF Playhouse, TheatreFIRST, Precarious Theatre, Playhouse West and others.

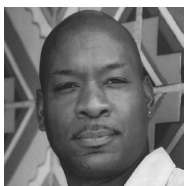


THANK YOU TO:
 Antoine Hunter for ASL consultation
 Teddy & Rick Tabor
 Taura Busson
 Massimo's Ristorante
 Waters Moving and Storage
 Associated Services-Alta Water

Timothy Redmond (Jim/Tom/Kenneth) is making his Center REP debut. He most recently appeared in *Strangers, Babies* (Roy) at Shotgun Players. Regionally he has worked with South Coast Rep and Relentless Theatre Company. In the Bay Area he has worked with Berkeley Rep, Boxcar Theatre, Golden Thread Productions, Impact Theatre, New Conservatory Theatre, Playwrights Foundation, Porchlight Theatre, The San Francisco Playhouse, Second Wind Productions, Shakespeare Napa Valley, Shotgun Players, Sonoma County Rep, TheatreWorks, and Town Hall Theatre. Thanks, as always, to his wife Amber for her endless support.



Adrian N. Roberts* (Albert/Kevin) is thrilled to be working at Center REP. He was last seen as Martin Luther King Jr. in *The Mountaintop* at TheaterWorks. Other Bay Area credits include Commander Osembenga in *Ruined* at Berkeley Rep, Claudius/Ghost in *Hamlet* at California Shakespeare, Linc in *Buffaloed* at San Jose Stage, Daniel Jamison in *First Person Shooter* at SF Playhouse, other regional credits include Ken in *The Playboy of the West Indies* at Lincoln Center NY, three seasons at the Oregon Shakespeare Festival and many other regional credits. Mr Roberts has appeared on television in such shows as *Scrubs*, *Criminal Minds*, *Brothers & Sisters*, *Trauma*, and the Sci-Fi television movie *Vampires Out For Blood*. Mr Roberts is a graduate of ACT's MFA program.



CENTER REP	Center REPerory Company	
	Managing Director - Scott Denison Artistic Director - Michael Butler	
	<i>Production Services</i> Production Services Coordinator Toni Kilcoyne Technical Staff Steve Pino John Earls Michael Arlen Chris Currie Kieren McEntee Garrick Schuster Stephen Spleiss Josh Stouffer <i>Audience Services</i> Audience Svcs Coordinator Courtney Egg Ticket Office Staff Jeremiah Vierling Robert Nolan Andrea Toney Jennifer Haga Kiersten Jones Karla Kophammer Britt Lauer Usher Coordinator Kevin Challand <i>Costumes</i> Costume Manager Max Hilsabeck Assistant Costumer Michael A. Berg Casting Director Jennifer Perry <i>Education</i> Education Directors Jeff Draper Kerri Shann	<i>Marketing</i> Marketing Director Gabe Marin Marketing Assistant Ariel Brewer <i>Production</i> Production Manager Jeff Collister <i>Technical</i> Technical Director Joshua Lipps Master Electrician Del Medoff Carpenters Matthew Hougey Gabriel Johnson Jordan Scott Chris Swartzell Assistant Stage Manager Joe Coe Deck Manager Alex Logemann Dresser Edie Olson Production Assistants Cameron Burrill Cameron Lang Bryan Marks Yelyzaveta Tashkevych <i>Administration</i> Asst. to Managing Director Gail Pfeifer Program Linda Nomura

CREATIVE TEAM

Bruce Norris (Playwright) is the author of *Clybourne Park*, which won the Tony Award for Best Play in 2012, the Olivier and Evening Standard Awards (London) for Best Play, 2011, and the Pulitzer Prize for Drama, 2011. Other plays include *The Infidel* (2000), *Purple Heart* (2002), *We All Went Down to Amsterdam* (2003), *The Pain and the Itch* (2004) and *The Unmentionables* (2006), and *A Parallelogram* (2010), all of which had their premieres at Steppenwolf Theatre, Chicago. Two plays, titled *The Low Road* and *Domesticated*, respectively, had 2013 premieres at the Royal Court Theatre, London and at Lincoln Center Theatre, New York. His work has also been seen at Playwrights Horizons (New York), Lookingglass Theatre (Chicago), Philadelphia Theatre Company, Woolly Mammoth Theatre (Washington, D.C.) Staatstheater Mainz (Germany) and the Galway Festival (Ireland), among others. He is the recipient of the Steinberg Playwright Award (2009), and the Whiting Foundation Prize for Drama (2006) as well as two Joseph Jefferson Awards (Chicago) for Best New Work. As an actor he can be seen in the films *A Civil Action* and *The Sixth Sense*, and the recent *All Good Things*. He lives in New York.

Michael Butler (Director/Artistic Director) This is Michael's eighth season as Artistic Director of Center REP, where his directing credits include *Don't Dress for Dinner*, *The Underpants*, *A Number*, *Dracula*, *Boeing-Boeing* and *To Kill a Mockingbird*, as well as the Shellie and BATCC Award-winning productions of *Around the World in 80 Days*, *Picasso at the Lapin Agile*, *The Marriage of Figaro*, *How the Other Half Loves*, *A Midsummer Night's Dream*, *Enchanted April*, and *Witness For The Prosecution*. His directing work has also been seen at San Jose Rep, Cleveland Playhouse, Seattle Rep, Laguna Playhouse, ACT in Seattle, Marin Theatre Company, Aurora Theatre Company, San Jose Stage, Shakespeare Santa Cruz, and The Juilliard School, of which he is a graduate. As an actor, Michael has worked on Broadway and off, in regional theatres, film and television, as well as REP's productions of *The Mousetrap*, *Noises Off* and *Rumors*. He is a published songwriter and the co-writer and composer of numerous music-theatre pieces, which he has directed and performed in NY, LA, and at festivals in India and Morocco. In his career as a performer he has also danced with the Erick Hawkins Dance Company, portrayed the villainous Pierre LeChance on *The Guiding Light*, and played guitar and harmonica in many rock, blues, and country western bands at all the notable dives in NYC.

J. B. Wilson (Scenic Designer) returns to Center REP for *Clybourne Park*, which is his second collaboration with director Michael Butler. Earlier this season Wilson designed the set for *Ella, the musical*. His first design for REP was *Witness for the Prosecution* (2009) although in 2004 his set for the Marin Theatre Company / Center REP co-production of *Fugitive Kind* played the Leshner Theatre, while his Theatreworks set for *Ragtime* was adapted for the Hofmann stage. Wilson has designed extensively in both national and Bay Area venues, and is grateful to have been honored with many awards for his work. He is a graduate of Carnegie Mellon University, a member of United Scenic Artists Local 829, and a Professor of Theatre Arts at San Francisco State. Examples of his past work can be seen at jbwilson.com.

Kurt Landisman (Lighting Designer) Local audiences will be familiar with his work through past productions designed for Center REP including *Ella, the Musical*, *Sweet Charity*, *The 39 Steps*, *Old Wicked Songs*, *Xanadu*, *Arms and the Man*, *Blues in the Night*, *Dracula*, *She Loves Me*, *Noises Off*, *All Shook Up*, *Cabaret*, *Ain't Misbehavin'*, *Musical of Musicals (The Musical!)*, *A Midsummer Night's Dream*, *The Mousetrap*, *How the Other Half Loves*, *Around the World in 80 Days*, and *Fugitive Kind*. His designs have been seen throughout the Bay Area at many theaters including San Francisco Opera, ACT, Berkeley Rep, San Jose Rep, Theatreworks, California Shakespeare Festival, The Magic Theatre, and Marin Theatre Company. Locally his work has garnered 16 Bay Area Critics Circle Awards, 5 LA Dramalogue Awards and 5 Shellie Awards. Nationally, his work has been seen at many regional opera & ballet companies, including the Los Angeles Opera, Minnesota Opera, Virginia Opera, Tulsa Opera, and Ballet Arizona. His designs have also been presented off-Broadway, represented at Circle Rep, and the Douglas Fairbanks Theatres. Other designs internationally include world premieres of plays by Sam Shepard in Japan, and Singapore, as well as the San Francisco Opera in Shanghai, China, and the Moscow Circus in Tokyo, Japan.

Elizabeth Poindexter (Costume Designer) is very excited to be working again with Center REPerory Company. Previous design credits with Center REP include *Doubt* and *The Mousetrap*. Betty's professional career has been divided between her two great loves, teaching and designing. She retired from San Jose State University, Department of TV, Radio, Film, and Theatre in 2009 where she taught costume and makeup for theatre and film for 27 years. While at SJSU she designed costumes and makeup for over 180 productions - including classical and modern theatre repertoire, musical theatre, jazz and modern dance. Betty is well known in the San Francisco Bay Area as a professional costume designer and makeup artist. Her credits include costume design work for Opera San Jose, American Musical Theatre of San Jose, San Jose Repertory Theatre, California Shakespeare Festival, Western Stage Company (Salinas, CA), Utah Opera (Salt Lake City), The Alley Theatre (Houston, TX). Betty's numerous credits as a makeup artist include San Francisco Opera, San Francisco Ballet, Mark Morris Dance Company (Brooklyn, NY), Opera San Jose, and American Musical Theatre of San Jose. She is a member of the International Alliance of Theatrical Stage Employees, Motion Picture Technicians and Allied Crafts of the United States and Canada-Makeup Artists and Hair Stylists-Local 706. Betty is a founding member of the Bay Area Costumers Alliance and an active member of the Costume Commission of the United States Institute for Theatre Technology.

The Director is a member of the STAGE DIRECTORS AND CHOREOGRAPHERS SOCIETY, a national theatrical labor union.

Lyle Barrere (Sound Designer) is thrilled to be returning to Center REP! Beginning his theatre career in the 5th grade, Lyle has worked almost 200 shows for many professional companies in the Bay Area and Los Angeles as a producer, director, sound or lighting designer, and stage manager. His sound design for *South Pacific* (2003, Willows Theatre Company) was nominated for a Bay Area Theatre Critics Circle Award and his design of *The Solid Gold Cadillac* (2004, Willows Theatre Company) was nominated for a Shellie Award. A graduate of the University of California, Los Angeles, with a degree in Physics, he enjoys hiking and scuba diving when not in the theatre. He was awarded the Eagle Scout Award from BSA Troop 204. Lyle is the Founding Artistic Director of the HOOLIGAN Theatre Company, which provides theatre experiences to college students of all majors. www.LyleBarrere.com

Madison Genovese (Props Manager) is a recent graduate of the University of Puget Sound with a Bachelor's in Vocal Performance. She has done props and set dressing for several shows with ACLO, and is very excited to be working with the wonderful cast and crew of *Clybourne Park*. Special thanks to Michael, Jeff, and Josh for welcoming me into the Center REP family.

Judy Disbrow (Wig Designer) and her company Theatrical Hairgoods have provided wigs for theatrical productions for over 30 years. She has worked with companies throughout the United States including Diablo Theatre Company, CCMT, La Jolla Playhouse, Arkansas Repertory Theatre, San Francisco Opera, Portland Opera, Florida Grand Opera, as well as many others.

Timothy Near (Dramaturgy) most recently directed *Falling Apart...Together* at the New Works Now Festival at the Public Theatre in New York. She has directed at theatres throughout the U.S. including Repertory Theatre of St. Louis, Arizona Theatre Company, Portland Center Stage, California Shakespeare Festival, Guthrie Theatre, Cincinnati Playhouse in the Park, Union Square Theatre in NYC, Alliance Theatre in Atlanta, La Jolla Playhouse, Ford's Theatre in D.C., Mark Taper Forum and Tiffany Theatres in L.A., Berkeley Rep, A Contemporary Theatre and The Intiman Theatre in Seattle, Dance Mission in S.F., Opera San Jose, The New York Shakespeare Festival and Center REP. From 1987 to 2009, Near was Artistic Director of San Jose Repertory Theatre. She is the recipient of the Woman of Achievement Award in the Arts given by the San Jose Mercury News/Women's Fund and also received the Janet Gray Hays Award for Women in Leadership.

David A. Young* (Stage Manager) is pleased to make his Center REP debut with this production of *Clybourne Park*. Dave has been the principal Stage Manager for San Francisco's Word for Word for many years, running their mainstage productions and leading their annual tours to France. Recent Word for Word credits include last summer's *In Friendship: Stories by Zona Gale* and last winter's *You Know When The Men Are Gone*. He has stage managed many memorable productions in the San Francisco Bay Area with Marin Theater Company, The Magic Theater, California Shakespeare Festival and others since the mid-1980's, and has also done work in Colorado, New Mexico and at the Edinburgh Fringe Festival.