

PAIGE REINIS (Associate Producer) is an independent producer, writer, stage manager and script supervisor who hails from Berkeley California. She holds degrees from University of California, Davis and Vancouver Film School. Ms. Reinis has been in the entertainment business for nearly 20 years and has worked across the country in both theatre and film. Her favorite theatrical credits include: Broadway's hit musical *Wicked! The Musical*, Tony Award winning Russell Simmon's *Def Poetry Jam*, Off-broadway *The Orion Experience*, & *Ennio!*; In Film: *Saving Shiloh*, SyFy Channel's *Showdown at Area 51*, Paramount's *Twisted*, Jon Chu's *The LXD* and Marvel's *One-Shot: A Funny thing Happened On The Way To Thor's Hammer*. Ms. Reinis currently works as the Director of Operations for the The New York Musical Theatre Festival where she met the infamous Roger Bean, fell in love with the show *Life Could Be A Dream* and is so excited to be a part of this production and the LCBAD team! Love to Marmalade and Daddio.

MICHAEL BUTLER (Artistic Director) This is Michael's ninth season as Artistic Director of Center REP, where his directing credits include *Clybourne Park*, *Don't Dress for Dinner*, *The Underpants*, *A Number*, *Dracula*, *Boeing-Boeing* and *To Kill a Mockingbird*, as well as the Shellie and BATCC Award-winning productions of *Around the World in 80 Days*, *Picasso at the Lapin Agile*, *The Marriage of Figaro*, *How the Other Half Loves*, *A Midsummer Night's Dream*, *Enchanted April*, and *Witness For The Prosecution*. His directing work has also been seen at San Jose Rep, Cleveland Playhouse, Seattle Rep, Laguna Playhouse, ACT in Seattle, Marin Theatre Company, Aurora Theatre Company, San Jose Stage, Shakespeare Santa Cruz, and The Juilliard School, of which he is a graduate. As an actor, Michael has worked on Broadway and off, in regional theatres, film and television, as well as REP's productions of *The Mousetrap*, *Noises Off* and *Rumors*. He is a published songwriter and the co-writer and composer of numerous music-theatre pieces, which he has directed and performed in NY, LA, and at festivals in India and Morocco. In his career as a performer he has also danced with the Erick Hawkins Dance Company, portrayed the villainous Pierre LeChance on "The Guiding Light", and played guitar and harmonica in many rock, blues, and country western bands at all the notable dives in NYC.

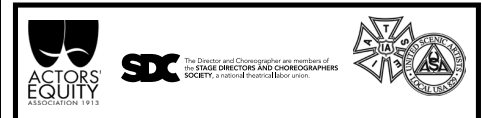
SCOTT DENISON (Managing Director) has been a leader in the arts for 40 years for Walnut Creek and the surrounding communities. For the last 23 years he has been the General Manager of the Leshler Center and oversees over 850 public events each year. He coordinates performing arts activities with over 85 producers and producing organizations. He is also the Managing Director of Center REPeritory Company producing 7 professional productions each season; and is the director and co-founder of Fantasy Forum Actors Ensemble, an adult family performing arts company which presents programs for the young and Young at Heart. Scott directed CCMT's hits *Disney's Beauty and the Beast*, *Rodgers and Hammerstein's Cinderella*, *Hairspray*, and for the past 13 seasons Center REP's *A Christmas Carol*. Denison has directed over 150 productions including REP's *The Lady with All the Answers* starring Kerri Shawn. He directed *Les Misérables* this Spring. In 1979 he created the Shellie Awards, which annually honors outstanding performing arts achievement in Contra Costa county. In 2007 he created the Chevron Family Theatre Festival bringing adult nationally acclaimed performances together for one day performing to over 7,000 guests of all ages.

OUR SPONSORS

Chevron (Season Sponsor) has been the leading corporate sponsor of Center REP and the Leshler Center for the Arts for the past nine years. In fact, Chevron has been a partner of the LCA since the beginning, providing funding for capital improvements, event sponsorships and more. Chevron generously supports every Center REP show throughout the season, and is the primary sponsor for events including the Chevron Family Theatre Festival in July. Chevron has proven itself not just as a generous supporter, but also a valued friend of the arts.

Diablo Regional Arts Association (DRAA) (Season Partner) is both the primary fundraising organization of the Leshler Center for the Arts (LCA) and the City of Walnut Creek's appointed curator for the LCA's audience outreach. DRAA's role in the community is all about building partnerships with the focused goal of enhancing artistic quality at the LCA and providing opportunities for everyone to enjoy the arts. Through partnerships with the LCA and its producers, individual donors, corporate and foundation sponsors and the City of Walnut Creek, DRAA plays a vital role in advancing the arts for the betterment of the community. Please visit us online at www.draa.org.

Leshler Foundation (Foundation Sponsor) Since 1994, the Dean & Margaret Leshler Foundation has awarded grants totaling more than \$40 million and reaching citizens in all parts of Contra Costa County. True to the original wishes of Dean and Margaret Leshler, the Foundation continues to build on the strengths of the community by supporting organizations and programs that provide help and support to people in need; enhance and enrich the lives of all citizens; and promote a healthy and exciting future for the community. Established in 1989, the Foundation received its principal assets from Dean Leshler's estate in 1993 and 1995. In 1997, an additional endowment from Dean Leshler's estate followed the death of Margaret Leshler. A significant and final bequest from Mr. Leshler's estate was received in 2003. As a family foundation, support for the Contra Costa community will be carried on by the next generation of family members. Grant-making decisions are based on the vision of Dean and Margaret Leshler who felt quality education, diverse art programs, and healthy children and families are the building blocks of a strong and vibrant community. The Leshlers defined the "spirit of giving" as "investing in the community and its people." By providing financial support and direction in these critical areas, the Dean & Margaret Leshler Foundation is investing every day, every week and every year in the health and well-being of this county that Dean and Margaret so loved.



The videotaping or other video or audio recording of this production is strictly prohibited.

CITY COUNCIL
Kristina Lawson, Mayor
Bob Simmons, Mayor Pro-Tem
Loella Haskew
Cindy Silva
Justin Wedel

CITY MANAGER
Ken Nordhoff

DIRECTOR
 Arts, Recreation and
 Community Services
Kevin Safine

ARTS COMMISSION
Jane Emanuel, Chair
Glynnis Cowdery, Vice Chair
Joe Bologna, Polly Bradbury, Anita Sagastegui

MUSICIANS

Brandon Adams
 Conductor/Keyboard 1

Joan Cifarelli - Keyboard 2

John Imholz - Guitar

Erika Johnson - Drums

Richard Mathias - Woodwinds

THANK YOU TO OUR OPENING NIGHT DINNER SPONSORS:
 Fleming's Prime Steakhouse & Wine Bar
 Oi-C Bowl
 Scott's Seafood Grill and Restaurant

THANK YOU TO:
 Massimo's Ristorante
 Waters Moving and Storage
 Associated Services-Alta Water

Center REPeritory Company
 Managing Director - Scott Denison
 Artistic Director - Michael Butler

<i>Production Services</i> Production Services Coordinator Toni Kilcoyne Technical Staff Steve Pino John Earls Michael Arlen Chris Currie Kieren McEntee Garrick Schuster Stephen Spleiss Josh Stouffer <i>Audience Services</i> Audience Svcs Coordinator Courtney Egg Ticket Office Staff Jeremiah Vierling Robert Nolan Jennifer Haga Kiersten Jones Karla Kopfhammer Britt Lauer Caleb Neeper Trevor Owen <i>Administration</i> Asst. to Managing Director Gail Pfeifer Program Linda Nomura <i>Education</i> Education Directors Jeff Draper Kerri Shawn <i>Marketing</i> Marketing Director Gabe Marin Marketing Associate Ariel Brewer Casting Director Jennifer Perry	<i>Production</i> Production Manager Jeff Collister <i>Technical</i> Technical Director Joshua Lipps Master Electrician Del Medoff Carpenters Matthew Hougey Gabriel Johnson Lisa Peterson Chris Swartzell Stage Manager Joe Coe Deck Manager Alex Logemann Assistant Scenic Designers Mia Cook Hilary Noxon Sound Assistant John DiGiorgio Scenic Artist Alexandra Kranyak <i>Costumes</i> Costume Manager Shannon Sigman Costumers Michael A. Berg Katie Dowse Dresser Eddie Olson Production Assistants Michael Ghysels Dylan McCombs Kathleen Salazar Emily Steiner Yelyzaveta Tashkevych
--	---

Coming up next from Center REP:

DEATHTRAP
 by Ira Levin

October 24 - November 22, 2014

CENTER REPERTORY COMPANY
 Michael Butler, Artistic Director Scott Denison, Managing Director

in association with
Jonathan Reinis and Roger Bean
 present

Life Could Be A Dream

Written and Directed by **Roger Bean**

Musical Arrangements by **Roger Bean & Jon Newton**
 Additional Musical Arrangements by **Steve Parsons**
 Associate Producer **Paige Reinis**

Scenic Designer Michael Carnahan	Costume Designer Bobby Pearce	Lighting Designer Kurt Landisman
Sound Designer Jeff Mockus	Props Master Charlynn Knighton	Wig Designer Judy Disbrow
	Stage Manager Kathleen J. Parsons*	
	Cast	
Ryan Drummond*	Derek Keeling*	Jerry Lee*
Tim Homsley*		Sharon Rietkerk*

Music Direction by **Brandon Adams**
 Choreographed by **Lee Martino**

Originally Produced by David Elzer, Roger Bean & Peter Schneider.
Life Could Be A Dream premiered at Milwaukee Repertory Theater.
 Joseph Hanreddy, Artistic Director and Timothy J. Shields, Managing Director

Life Could Be A Dream is presented through special arrangement with Steele Spring Stage Rights.
 For licensing information, visit www.StageRights.com

Margaret Leshler Theatre
 August 29 - October 5, 2014
 Leshler Center for the Arts

Season Sponsor **Chevron**

Foundation Sponsor **LESHER FOUNDATION**

Production Sponsor **UnionBank**

d r a a Season Partner
 Diablo Regional Arts Association

LESHER CENTER for the Arts

*Member of Actors' Equity Association, the Union of Professional Actors and Stage Managers in the United States
 The Scenic, Costume, Lighting and Sound Designers are members of United Scenic Artists Union
 The Director and Choreographer are members of the Stage Directors and Choreographers Society
 Center REP is a member of Theatre Bay Area and Theatre Communications Group (TCG), The National Organization for the American Theatre

CITY OF WALNUT CREEK

CAST

Denny Varney.....RYAN DRUMMOND*
Eugene Johnson.....TIM HOMSLEY*
Skip Henderson.....DEREK KEELING*
Wally PattonJERRY LEE*
Lois Franklin/Mrs. Varney.....SHARON RIETKERK*

TIME and PLACE

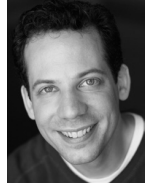
1963
Springfield, USA

There will be one intermission.

CAST BIOGRAPHIES

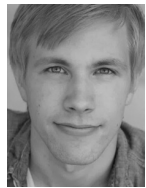
RYAN DRUMMOND* (*Denny Varney*)

When Mr. Drummond started pursuing his Theatre Arts degree at Eastern Michigan University in 1990, he had only one goal for his career...to make a living as an actor. His goal became reality in 1993, before he even had his degree, and he has lived it to this day. 21 years and counting! Thank you for coming and supporting live theatre! Sh-Boom! Mr. Drummond dedicates this performance to his father, Prof. David Drummond, who taught him every block of foundation in this art form. Mr. Drummond is a proud member of Actor's Equity Association. Enter www.RyanDrummond.com into your address bar and see what that does.



TIM HOMSLEY* (*Eugene Johnson*)

is excited to be back at Center REP. You may have seen him here as Sonny Malone in *Xanadu*, Melchior in *Spring Awakening*, or Mr. Boxer in *A Christmas Carol*. Other Bay Area credits include Eugene Marchbanks in *A Minister's Wife*, Kai in *The Snow Queen*, (San Jose Rep), Jack in *Into the Woods* (SF Playhouse), and Joseph in *Joseph and the Amazing Technicolor Dreamcoat* (Contra Costa Musical Theatre). Other regional theater work includes Puppeter in *The Pirates of Penzance*, Chorus in *Willful* (Oregon Shakespeare Festival), and Chip in *The 25th Annual Putnam County Spelling Bee* (Oregon Cabaret Theater). TV credits include *I (Almost) Got Away with It*. Tim received his BFA from Southern Oregon University.



DEREK KEELING* (*Skip Henderson*)

starred as Danny Zuko on Broadway in both the revival and National tour of *Grease*. He appeared as Johnny Cash in the 1st Broadway tour of *Million Dollar Quartet*. Off-Broadway he won the MITF Award for Best Actor in a Musical for his role as Barry in *Connect-Disconnect*. He also appeared on NBC's "Grease: You're the One That I Want" and finished as 2nd Runner-up. Other credits: originating the role of Charles Darnay in the World Premiere of the Broadway musical *A Tale Of Two Cities*, Chad in *All Shook Up* (regional premiere), The Fonz in *Happy Days the Musical*, and Glen in *The Wedding Singer*. Concerts include: Feinstein's in NYC, starring soloist with the California Philharmonic at Disney Hall in LA and his Tribute to the music of Johnny Cash concert tour. His original music is available on iTunes, at www.Derek-Keeling.com, and in the lobby.



JERRY LEE* (*Wally Patton*) is delighted to make his Center REP debut. He is the Producing Artistic Director of Saclmpulse Theatre (*Orlando, The Turn of the Screw, The Plexiglas Menagerie*). Other credits: Sacramento Theatre Company (*Closer Than Ever, It's a Wonderful Life*), California Musical Theatre (*Forbidden Broadway*), Diablo Theatre Company (*Shrek*), New Helvetia Theatre (*[title of show]*), Contra Costa Musical Theatre (*Les Misérables*). Lee is a proud member of Actors' Equity Association and a graduate of The Pacific Conservatory of the Performing Arts at PCPA Theaterfest (*Songs for a New World, The Weir*).



SHARON RIETKERK* (*Lois Franklin/Mrs. Varney*) is happy to be back at Center REP where she was seen in their productions of *Rumors, Xanadu*, and *She Loves Me*. Other regional credits include San Jose Repertory Theatre (*A Minister's Wife, Candida*), Bay Area Theater Critics Circle Award nomination), American Conservatory Theater (*1776, Martha/Abigail u/s*), TheatreWorks Silicon Valley (*Marry Me a Little, Her; Little Women, Meg; The Secret Garden*, Rose, Bay Area Theater Critics Circle Award nomination), Lyric Theatre of Oklahoma (*Triangle, Chaya/Cynthia*), 42nd Street Moon (*Little Me, Belle Poitrine*, Bay Area Theater Critics Circle Award nomination; *Strike Up the Band*, Anne Draper), and San Francisco Opera Guild (*Pirates of Penzance, Mabel*). Ms. Rietkerk has performed in concert with Tony Award winner Faith Prince, the Grammy Award nominated Bay Brass, South Coast Symphony, Napa Valley Opera House, and the Bear Valley Music Festival Orchestra.



THE MUSIC OF LIFE COULD BE A DREAM

Music Clearance by Rubicon II Music Clearance, Burbank, CA.

All Songs Used By Permission.

All Rights Reserved.

SH BOOM written by James Keyes, Carl Feaster, Floyd McRae, Claude Feaster, James Edwards © 1954 (renewed) Unichappell Music Inc. (BMI)

GET A JOB written by Earl Beal, Raymond Edwards, William Norton and Richard Lewis © courtesy of EMI Longitude Music (BMI)

MAMA DON'T ALLOW IT written by Charles Davenport © 1929 (renewed) Chappell & Co., Inc. (ASCAP)

TEARS ON MY PILLOW written by Sylvester Bradford and Al Lewis © courtesy of Cherry Lane Music Publishing Company, Inc., on behalf of Gladys Music (ASCAP) and Sovereign Music Co. (ASCAP)

FOOLS FALL IN LOVE written by Jerry Leiber and Mike Stoller © Courtesy of Sony/ATV Tunes LLC (ASCAP)

RUNAROUND SUE written by Ernie Maresca and Dion Di Mucci © 1961 (Renewed) Mijac Music (BMI) and Bronx Soul Music Inc. (ASCAP). All rights on behalf of Mijac Music administered by Warner-Tamerlane Publishing Corp.

THE WANDERER written by Ernie Maresca - This arrangement © Steele Spring Productions

DEVIL OR ANGEL written by Blanche Carter © 1955 (renewed) Unichappell Music Inc. (BMI)

EARTH ANGEL written by Jesse Belvin © 1954 Embassy Music Corporation (BMI)

ONLY YOU written by Buck Ram and Ande Ram © Courtesy of Hollis Music Inc. (BMI)

I ONLY HAVE EYES FOR YOU written by Al Dubin and Harry Warren © 1934 (Renewed) WB Music Corp. (ASCAP)

STAY written by Maurice Williams © Used by permission of Cherio Corp. (BMI)

(JUST LIKE) ROMEO & JULIET written by Freddie Gorman and Bob Hamilton © Courtesy of Jobete Music Co. Inc and Stone Agate Music

SUNDAY KIND OF LOVE written by Barbara Belle, Anita Leonard Nye, Louis Prima, Stan Rhodes © Universal Music Corp. (ASCAP). EMI April Music Inc. (ASCAP), and Larry Spier Music LLC/ Memory Lane Music

UNCHAINED MELODY written by Hy Zaret and Alex North © Courtesy of Frank Music Corp. (ASCAP)

EASIER SAID THAN DONE written by William B. Linton and Larry Freddie Huff © Courtesy of EMI Longitude Music

(YOU'VE GOT) THE MAGIC TOUCH written by Buck Ram © Universal Music Corp. (ASCAP)

LONELY TEARDROPS written by Roquel Davis, Berry Gordy Jr., Gwendolyn Gordy Fuqua and Tyran Carlo © 1958 Third Above Music, Inc. (ASCAP), Jobete Music (ASCAP)

BUZZ BUZZ BUZZ written by Robert Byrd and John Dolphin © Courtesy of Stone Agate Music (BMI)

THE GLORY OF LOVE written by William J. Hill © Used by permission of Shapiro, Bernstein & Co., Inc. (BMI)

DUKE OF EARL written by Eugene Dixon, Earl Edwards, Bernice Williams (BMI) © Courtesy of Conrad Music (BMI)

PRETTY LITTLE ANGEL EYES written by Tommy Boyce, Curtis Lee © Universal Music - Careers on behalf of itself (BMI)

RAMA LAMA DING DONG written by George Jones Jr. (BMI) © 1958-1961 (renewed) Jimbo Publishing Co., Girard, Ohio.

CREATIVE TEAM

ROGER BEAN (*Playwright/Director*) is the creator of the long-running off-Broadway smash hit *The Marvelous Wonderettes*, which has played in hundreds of theaters around the world. Mr. Bean also created two popular sequels for these four delightful song leaders from Springfield High: *The Marvelous Wonderettes: Caps and Gowns* and the holiday celebration *Winter Wonderettes*. Original cast albums for all three *Wonderettes* shows are available online at Amazon and iTunes. Additional audience-pleasing jukebox hits from Mr. Bean include *Summer of Love, The Andrews Brothers, Why Do Fools Fall In Love?, Route 66* (over 100 productions throughout the country), and the long-running Los Angeles hit *Life Could Be A Dream*, the '60s doo-wop musical that received the LA Drama Critics Circle Award, the LA Weekly Theatre Award and the Backstage Garland Award for Outstanding Musical of 2010. www.rogerbean.com

BRANDON ADAMS (*Music Director*) is thrilled to be working with Center REP again. A recipient of numerous Bay Area awards for Music Direction. Favorite credits include: *Funny Girl, Girl Crazy, Me and My Girl, Too Many Girls*, and *Something for the Boys*. Recent productions include *Lucky Stiff, Old Wicked Songs, Xanadu* and *The 25th Annual Putnam County Spelling Bee* at REP as well as *Grand Night for Singing* and *Shrek* with DTC and *Les Miz* with CCMT.

LEE MARTINO (*Choreographer*) is an award-winning choreographer with four Los Angeles Ovation Awards and four Drama Critics Circle Awards including the Joel Hirschhorn Award for outstanding achievement in musical theatre. Lee has been involved with *Life Could A Dream* since it's first production at the Hudson Theatre. She was the resident choreographer for the Reprise Theatre Company under the artistic direction of Jason Alexander. Recent credits: *Life Without Makeup*, starring Rita Moreno (Berkeley Repertory Theatre) *American Misfits* (Boston Court), *Kiss Me Kate* (Reprise Theatre Company), *Falling for Eve* (The York Theatre Company in Manhattan); the NBC special, *Shall We Dance on Ice* featuring Broadway dancers and Olympic Ice Dance teams, animated feature film *Alpha and Omega 3D*, Warner Bros. animated feature *The King and I*. She has also directed and choreographed for Harley-Davidson, Ford Motor Company, Spa Resort Casino, Buena Vista Entertainment, Disney International, Universal Studios, Alzheimer's and The Actor's Fund. Lee teaches at Mt. San Antonio College and UCLA. She is a member of SDC. Thank you to Roger and Center REP!

MICHAEL CARNAHAN (*Scenic Designer*) National Tour: *A Christmas Story The Musical*; Off-Broadway: *The Happiest Song Plays Last* (Second Stage); *The Piano Lesson* (Signature Theatre); *The First Breeze of Summer* (Signature Theatre); *The Marvelous Wonderettes*; *Three Mo' Tenors*; *Pygmalion*; *Howie the Rookie*; *Brando*. Regional: American Conservatory Theater, McCarter Theatre, Williamstown Theatre Festival, Pasadena Playhouse, Two River Theatre, Cleveland Play House, Laguna Playhouse, Utah Shakespearean Festival, Northlight Theatre, Signature Theatre (Arlington, VA), Ogunquit Playhouse, Arshet Center, Musical Theatre West, San Jose Repertory. Broadway (Associate Scenic Designer): *Peter and The Starcatcher*; ANN: *The Ann Richards Play*; *Cyrano de Bergerac*; *The Importance of Being Earnest*; *Bloody Bloody Andrew Jackson*; *All About Me*; *White Christmas*; *Curtains*. www.michaelcarnahandesign.com

BOBBY PEARCE (*Costume Designer*) was nominated for a Tony Award and an Outer Critics Circle Award for Broadway's *Taboo*. Most recently his work could be seen in *The Children of Eden* at The Kennedy Center. Design highlights include: Stage- *Really Rosie* (Bucks County Playhouse), *Ritual Cyclical* (Lincoln Center), *Summer of Love* (Ogunquit Playhouse), *Falling for Eve* (York Theatre), *The Marvelous Wonderettes* (NYC, Albany, Cincinnati, Long Beach, San Jose, and Sacramento), *Signed, Sealed, Delivered* (Las Vegas), *The Syringa Tree* (New York/London), *The Red Dog Howls* (El Portal/LA), *L'Incoronazione De Poppea* (Wolf Trap Opera) and Chita Rivera's *Tour Chita and All That Jazz*. Television- "The Rosie O'Donnell Show", "Rosie Live", "The Rosie Show" and "The Big Gay Sketch Show". Film- *Let It Snow* starring Bernadette Peters. He's designed for Liza Minnelli, Gwen Verdon, Madeline Kahn, Elizabeth Ashley, Glenn Close, Marla Maples, and International Skating Champions - Maia and Alex Shibutani and Evan Bates (2014 Olympics). www.bobbypearce.com

KURT LANDISMAN (*Lighting Designer*) Local audiences will be familiar with his work through past productions designed for Center REP including *The 25th Annual Putnam County Spelling Bee, Sleuth, Ella, the Musical, Sweet Charity, The 39 Steps, Old Wicked Songs, Xanadu, Arms and the Man, Blues in the Night, Dracula, She Loves Me, Noises Off, All Shook Up, Cabaret, Ain't Misbehavin', Musical of Musicals (The Musical!), A Midsummer Night's Dream, The Mousetrap, How the Other Half Loves, Around the World in 80 Days, and Fugitive Kind*. His designs have been seen throughout the Bay Area at many theaters including San Francisco Opera, ACT, Berkeley Rep, San Jose Rep, Theatreworks, California Shakespeare Festival, The Magic Theatre, and Marin Theatre Company. Locally his work has garnered 16 Bay Area Critics Circle Awards, 5 LA Dramalogue Awards and 5 Shellie Awards. Nationally, his work has been seen at many regional opera & ballet companies, including the Los Angeles Opera, Minnesota Opera, Virginia Opera, Tulsa Opera, and Ballet Arizona. His designs have also been presented off-Broadway, represented at Circle Rep and the Douglas Fairbanks Theatres. Other designs internationally include world premieres of plays by Sam Shepard in Japan, and Singapore, as well as the San Francisco Opera in Shanghai, China, and the Moscow Circus in Tokyo, Japan.

JEFF MOCKUS (*Sound Designer*) has designed sound for Center REP's *The 25th Annual Putnam County Spelling Bee, Old Wicked Songs, Xanadu, A Marvelous Party, Cabaret, Ain't Misbehavin', Musical of Musicals: The Musical!, Hank Williams Lost Highway, Around the World In 80 Days, and The Marriage of Figaro*. Among his recent work are Santa Cruz Shakespeare's *As You Like It* and *Merry Wives Of Windsor*, TheatreWorks' *Once On This Island, Silent Sky, Little Women, Being Earnest, Big River, Of Mice and Men, The Secret Garden, Fly By Night, Superior Donuts, and [title of show]*, American Conservatory Theater's *Clybourne Park*, California Shakespeare Theatre's *Miss Warren's Profession*, and San Jose Repertory's *The Big Meal*. Other work includes world premieres of *Tracy's Tiger* for Oregon Shakespeare Festival and *Lend Me A Tenor: The Musical* for Utah Shakespearean Festival, the soundscapes for Yosemite National Park's visitor's center, and the original score for Legoland California's firework spectacular, *A Spark in The Knight*.

CHARLYNN KNIGHTON (*Props Master*) is excited to be a new member of the Center REP family! Over the past year, she has had the privilege to work as the Props Manager at San Jose Repertory Theatre and two seasons at Millbrook Playhouse as the Props Designer. Some of her favorite shows she has worked on have been *The Snow Queen, Crimes of the Heart, She Loves Me, I'll Be Back Before Midnight, The 39 Steps, A Midsummer Night's Dream, Boeing Boeing, and Every Christmas Story Ever Told*. Charlynn has also worked as the Children's Camp Director for Alleycat Theatrics in Colorado and Millbrook Playhouse in Pennsylvania. Eventually, she hopes to return to school and get her masters in Theatre for Youth. Until then, she looks forward to the adventures ahead of her with Center REP.

JUDY DISBROW (*Wig Designer*) and her company Theatrical Hairgoods have provided wigs for theatrical productions for over 30 years. She has worked with companies throughout the United States including Diablo Theatre Company, CCMT, La Jolla Playhouse, Arkansas Repertory Theatre, San Francisco Opera, Portland Opera, Florida Grand Opera, as well as many others.

KATHLEEN J. PARSONS* (*Stage Manager*) is excited to be doing another show with Center REPertory Company. Companies she has worked for include Rubicon Theatre Company, Access Theatre, North Shore Music Theatre, American Conservatory Theatre, The Pasadena Playhouse, Berkeley Repertory Theatre, Teatro Zinzanni, the American Musical Theatre of San Jose, San Jose Rep, and the National Theatre of the Deaf. Kathleen was also the Production Manager for the California International Theatre Festival.

ALEX LOGEMANN (*Deck Manager*) is celebrating his 46th show backstage with Center REP. Alex has been backstage for eleven seasons and is beyond pleased to be involved with such an amazing group. Alex has also worked backstage for Contra Costa Musical Theatre and with Diablo Theatre Company. Alex is a proud member of the Fantasy Forum Actors Ensemble. He is very thankful for our community and the fun it provides. "Do not spoil what you have by desiring what you have not; remember that what you now have was once among the things you only hoped for." -Epicurus

JONATHAN REINIS (*Producer*) Broadway: *Pippin* directed by Diane Paulus, (Tony Award 2013, Drama Desk Award), Dan Lauria and Judith Light in *Lombardi* (2010), Carrie Fisher in *Wishful Drinking* (2009-10), Harvey Keitel in *Jerry Springer: The Opera* at Carnegie Hall (2008), *How The Grinch Stole Christmas: The Musical* (2006-7), *Kiki and Herb: Alive On Broadway* (Tony Nomination 2006), *Dame Edna* (Tony Award, 2000) , Russell Simmons's *Def Poetry Jam* (Tony Award, 2003), *Bill Maher: Victory Begins at Home* (Tony nomination, 2003) and *It Ain't Nothin' But the Blues* (Tony nomination, 1999); . San Francisco/ Touring productions: *Wishful Drinking* at Berkeley Rep and National Tour, Eve Ensler's *The Vagina Monologues*; Sam Shepard's *The Late Henry Moss* (Sean Penn, Woody Harrelson, Nick Nolte and Cheech Marin); *Dame Edna*, Steve Martin's *Picasso at the Lapin Agile* (national tour); John Leguizamo's premiere of *Freak*; *Gross Indecency: The Three Trials of Oscar Wilde*; *The Piano Lesson* (national tour) and *Forever Tango* (national tour). Mr. Reinis built and operated a 750 seat Theatre on the Square in San Francisco (1981-2002) and is a member of the Broadway League.