

MICHAEL BUTLER (Artistic Director) This is Michael's ninth season as Artistic Director of Center REP, where his directing credits include *Clybourne Park*, *Real Housewives of Walnut Creek*, *Don't Dress for Dinner*, *The Underpants*, *A Number*, *Dracula*, *Boeing-Boeing* and *To Kill a Mockingbird*, as well as the Shellie and BATCC Award-winning productions of *Around the World in 80 Days*, *Picasso at the Lapin Agile*, *The Marriage of Figaro*, *How the Other Half Loves*, *A Midsummer Night's Dream*, *Enchanted April*, and *Witness For The Prosecution*. His directing work has also been seen at San Jose Rep, Cleveland Playhouse, Seattle Rep, Laguna Playhouse, ACT in Seattle, Marin Theatre Company, Aurora Theatre Company, San Jose Stage, Shakespeare Santa Cruz, and The Juilliard School, of which he is a graduate. As an actor, Michael has worked on Broadway and off, in regional theatres, film and television, as well as REP's productions of *The Mousetrap*, *Noises Off* and *Rumors*. He is a published songwriter and the co-writer and composer of numerous music-theatre pieces, which he has directed and performed in NY, LA, and at festivals in India and Morocco. In his career as a performer he has also danced with the Erick Hawkins Dance Company, portrayed the villainous Pierre LeChance on "The Guiding Light", and played guitar and harmonica in many rock, blues, and country western bands at all the notable dives in NYC.

SCOTT DENISON (Managing Director) has been a leader in the arts for 40 years for Walnut Creek and the surrounding communities. For the last 24 years he has been the General Manager of the Leshar Center and oversees over 850 public events each year. He coordinates performing arts activities with over 85 producers and producing organizations. He is also the Managing Director of Center REPeritory Company producing 8 professional productions each season; and is the director and co-founder of Fantasy Forum Actors Ensemble, an adult family performing arts company which presents programs for the young and Young at Heart. Scott directed CCMT's hits *Les Misérables*, *Disney's Beauty and the Beast*, *Rodgers and Hammerstein's Cinderella*, *Hairspray*, and for the past 16 seasons Center REP's *A Christmas Carol*. Denison has directed over 150 productions including REP's *The Lady with All the Answers* starring Kerri Shawn. In 1979 he created the Shellie Awards, which annually honors outstanding performing arts achievement in Contra Costa County. In 2007 he created the Chevron Family Theatre Festival bringing adult nationally acclaimed performances together for one day performing to over 7,000 guests of all ages. This season, he directs *The Music Man* for Contra Costa Musical Theatre.

OUR SPONSORS

Chevron (Season Sponsor) has been the leading corporate sponsor of Center REP and the Leshar Center for the Arts for the past nine years. In fact, Chevron has been a partner of the LCA since the beginning, providing funding for capital improvements, event sponsorships and more. Chevron generously supports every Center REP show throughout the season, and is the primary sponsor for events including the Chevron Family Theatre Festival in July. Chevron has proven itself not just as a generous supporter, but also a valued friend of the arts.

Diablo Regional Arts Association (DRAA) (Season Partner) is both the primary fundraising organization of the Leshar Center for the Arts (LCA) and the City of Walnut Creek's appointed curator for the LCA's audience outreach. DRAA's role in the community is all about building partnerships with the focused goal of enhancing artistic quality at the LCA and providing opportunities for everyone to enjoy the arts. Through partnerships with the LCA and its producers, individual donors, corporate and foundation sponsors and the City of Walnut Creek, DRAA plays a vital role in advancing the arts for the betterment of the community. Please visit us online at www.draa.org.

Leshar Foundation (Foundation Sponsor) Since 1994, the Dean & Margaret Leshar Foundation has awarded grants totaling more than \$40 million and reaching citizens in all parts of Contra Costa County. True to the original wishes of Dean and Margaret Leshar, the Foundation continues to build on the strengths of the community by supporting organizations and programs that provide help and support to people in need; enhance and enrich the lives of all citizens; and promote a healthy and exciting future for the community. Established in 1989, the Foundation received its principal assets from Dean Leshar's estate in 1993 and 1995. In 1997, an additional endowment from Dean Leshar's estate followed the death of Margaret Leshar. A significant and final bequest from Mr. Leshar's estate was received in 2003. As a family foundation, support for the Contra Costa community will be carried on by the next generation of family members. Grant-making decisions are based on the vision of Dean and Margaret Leshar who felt quality education, diverse art programs, and healthy children and families are the building blocks of a strong and vibrant community. The Leshars defined the "spirit of giving" as "investing in the community and its people." By providing financial support and direction in these critical areas, the Dean & Margaret Leshar Foundation is investing every day, every week and every year in the health and well-being of this county that Dean and Margaret so loved.

ABOUT CENTER REPERTORY COMPANY

Center REP is the resident, professional theatre company of the Leshar Center for the Arts. Our season consists of eight productions a year – a variety of musicals, dramas and comedies, both classic and contemporary, that continually strive to reach new levels of artistic excellence and professional standards.

Our **mission** is to celebrate the power of the human imagination by producing emotionally engaging, intellectually involving, and visually astonishing live theatre, and through Outreach and Education programs, to enrich and advance the cultural life of the communities we serve.

What does it mean to be a producing theatre? We hire the finest professional directors, actors and designers to create our productions at Center REP. These are not touring productions – they're conceived and developed here, the sets and costumes are built in our shops, and the actors rehearse in our rehearsal hall. Whether the production is a Bay Area premiere or a Shakespearean classic, each is devised to be a one of a kind, artistic creation that will be a unique theatre experience for our audience.

What does it mean to be a professional theatre? It means that all our artists and artisans are career theatre-practitioners. Many of the actors in this production are members of Actors' Equity Association; many of our directors and designers are members of professional unions. All do theatre because it is their profession and their passion.

We are very proud to have the opportunity to produce professional theatre for our community in the beautiful theatres here at the Leshar Center for the Arts. Thank you for your support!

Center REPeritory Company
 Managing Director - Scott Denison
 Artistic Director - Michael Butler

<i>Production Services</i> Production Services Coordinator Toni Kilcoyne Technical Staff Steve Pino John Earls Michael Arlen Chris Currie Kieren McEntee Garrick Schuster Stephen Spleiss Josh Stouffer	<i>Audience Services</i> Audience Svcs Coordinator Courtney Egg Ticket Office Staff Jeremiah Vierling Robert Nolan Tiffany Del Valle Jennifer Haga Kiersten Jones Britt Lauer Caleb Neepser Trevor Owen Usher Coordinator Pat Rusich	<i>Marketing</i> Marketing Director Gabe Marin Marketing Assistant Ariel Brewer Casting Director Jennifer Perry	<i>Education</i> Education Directors Jeff Draper Kerri Shawn
<i>Costumes</i> Costume Manager Shannon Sigman Costumers Michael A. Berg Katie Dowse Dressers Edie Olson	<i>Production</i> Production Manager Jeff Collister	<i>Technical</i> Technical Director Joshua Lipps Master Electrician Del Medoff Carpenters Matthew Hougey Gabriel Johnson Chris Swartzell Assistant Stage Manager Joe Coe	<i>Administration</i> Production Assistant Ksenia Antonoff Ashley Ullinger Deck Manager Alex Logemann Asst. to Managing Director Gail Pfeifer Program Linda Nomura



CENTER REPERTORY COMPANY

Michael Butler, Artistic Director

Scott Denison, Managing Director

presents

MIRANDOLINA!
Mistress of a Tuscan Inn

By Carlo Goldoni

Adapted and Directed by Timothy Near

From a literal translation by Lisa Gottreich

Scenic Designer
Nina Ball

Costume Designer
Victoria Livingston-Hall

Lighting Designer
Kurt Landisman

Sound Designer
Theodore J.H. Hulsker

Songs
Michael Butler

Fight Director
Dave Maier

Properties Master
Kirsten Royston

Stage Manager
Nicole S. Langley*

Wigs
Judy Disbrow

Kathryn Butler
Michael Butler*
Lynda DiVito

Cast
Ben Euphrat*
Tracy Hazas*
Gabriel Marin*
Joe Metheny

Lizzie O'Hara
Mark Anderson Phillips*
Colin Thomson*

Margaret Leshar Theatre
 April 3 - May 2, 2015
 Leshar Center for the Arts

Season Sponsor



Season Partner



Foundation Sponsor



*Member of Actors' Equity Association, the Union of Professional Actors and Stage Managers in the United States
 The Scenic and Lighting Designers are members of United Scenic Artists Union
 The Director is a member of the Stage Directors and Choreographers Society
 Center REP is a member of Theatre Bay Area and Theatre Communications Group (TCG), The National Organization for the American Theatre



CITY COUNCIL
Bob Simmons, Mayor
Rich Carlston
Loella Haskew
Cindy Silva
Justin Wedel

CITY OF WALNUT CREEK

CITY MANAGER
Ken Nordhoff

ARTS COMMISSION
Jane Emanuel, Chair
Glynnis Cowdery, Vice Chair
Joe Bologna
Polly Bradbury
Anita Sagastegui

DIRECTOR
 Arts, Recreation and
 Community Services
Kevin Safine

ACTORS' EQUITY ASSOCIATION 1913

SDC The Director is a member of the STAGE DIRECTORS AND CHOREOGRAPHERS SOCIETY, a national theatrical labor union.

UNITED SCENIC ARTISTS LOCAL USA 89

CAST (in order of appearance)

Mirandolina..... Tracy Hazas*
Fabrizio.....Ben Euphrat*
The MarcheseMark Anderson Phillips*
di Forlipopoli
The Count d'Albafiorita..... Michael Butler*
The Cavaliere di Ripafratta..... Gabriel Marin*
Ortensia.....Lynda DiVito
Dejanira..... Lizzie O'Hara
Carlo, the Cavaliere's ServantColin Thomson*
Lucio, a servant of the Inn.....Joe Metheny
Sirena, a servant of the InnKathryn Butler

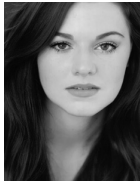
TIME and PLACE

The Age of Enlightenment, circa 1750
Mirandolina's Inn, Florence, Italy

There will be one intermission.

CAST BIOGRAPHIES

KATHRYN BUTLER (Sirena) is beyond thrilled to be a part of her second production with Center REP, where she was last seen as Martha Cratchit for the past two years in *A Christmas Carol*. She has spent her last four summers training with Young Repertory Theatre Workshop, and is a proud member of The Fantasy Forum Actor's Ensemble (*Legend of Banbury Cross*.) Throughout the year, she trains with Teen Actor's Studio at The Ballet School, where she has also assisted with Young Actor's Studio. She is an alumni of the Oakland School for the Arts theatre department, (*The Three Sisters, Hairspray, Cyrano de Bergerac*.) Production credits include: *Godspell* with "OMG, I Love That Show!" Productions (Stage Manager) and *Real Housewives of Walnut Creek* with Center REP (Asst. Stage Manager.) She is very grateful to have this opportunity to work with a team of such gifted artists. Enjoy the show!



MICHAEL BUTLER* (Count) is the artistic director of Center REP and very pleased to return to the REP stage, having previously played Ernie Cusack in *Rumors*, Lloyd Dallas in *Noises Off* and Paravicini in *The Mousetrap*, all directed by Timothy Near. As an actor, Michael has performed on Broadway, Off Broadway, in film, television, books on tape, and in regional theatres around the country. Highlights include the Broadway productions of *Macbeth* with Christopher Plummer and Glenda Jackson, and *Two Shakespearean Actors* with Victor Garber and Brian Bedford, the title role in *Candide* at the Guthrie, Brian Friel's *Winners* at The Roundabout, tours of Russia, Europe and Australia with The Acting Company, and six productions at San Jose Rep under the direction of Timothy Near. He also played the title role in the PBS production of David Gordon's "Punch and Judy Get Divorced," the guitar-wielding performance artist in the Merchant Ivory film "Slaves of New York", and was the villainous Pierre LeChance on "The Guiding Light." Michael is a graduate of The Juilliard School.



LYNDA DIVITO (Ortensia) is thrilled to be back at Center REP in *Mirandolina*. Other Center REP shows include; *Deathtrap*, *The Real Housewives of Walnut Creek*, *Clybourne Park*, *Lucky Stiff*, *Status Update*, *Rumors*, *Boeing Boeing*, *She Loves Me* & *All Shook Up*. Regional credits include,



Hairspray at CCMT, *Legally Blonde* at DTC, *Full Monty* at AMTSJ. International and NYC credits include; *CATS*/Jellylorum, *Off Bway*; *Sheba*, the musical, *Oliver* at Papermill Playhouse. Lynda toured internationally and was the lead singer for one of Amsterdam's hottest dance bands, JamSquare. Lynda holds a degree in theatre from SFSU. Many thanks to Timothy Near, Michael Butler and the Center REP family. For L&H&N, the loves of my life.

BEN EUPHRAT* (Fabrizio) is an actor, musician, director and producer based in San Francisco. Recent credits include *Ideation* at San Francisco Playhouse, *Twelfth Night* at Shotgun Players (acting and music direction), *HLR* at the Magic Theatre, and *Good People* at Marin Theatre Company. He's worked as a musician/actor at ACT, Theatreworks and various other companies throughout the Bay Area and Los Angeles as well. His next project will be music directing and performing with Central Works in *Project Ahab* this summer. Ben has also worked extensively in film and commercial; his latest feature "Saltwater" will be premiering later this year. Ben primarily plays the piano, drums and guitar, has studied improv with the Groundlings and IO West in Los Angeles, and has trained to be a corporeal mime. Follow him at beneuphrat.com.



TRACY HAZAS* (Mirandolina) is thrilled to be making her Center REP debut. In New York she has performed at a range of venues including New York City Center, Punchdrunk's McKittrick Hotel, Dixon Place, HERE Arts Center, Theater for the New City and elsewhere. Regionally she has performed with Theatreworks (Colorado), Company of Angels (LA), Vox Theater (NH), the Davis Shakespeare Ensemble and CounterBalance (LA). She is also a movement director, and teaches acting and movement in the Department of Theater and Performance Studies at Stanford. MFA, UC Irvine. www.tracyhazas.com



GABRIEL MARIN* (Cavaliere) is delighted to return to Center REP where he was last seen in *The Book Club Play*, *Pilgrims Musa* and *Sheri in the New World*, *Rumors*, *Arms and the Man*, *Noises Off*, *A Number*, and *Tuesdays with Morrie*. Locally, Marin has appeared in over 50 productions with American Conservatory Theater, Aurora Theatre Company, Bay Area Playwrights Foundation, Black Box Theatre, Center REPeritory Company, Magic Theatre, Marin Theatre Company, PlayGround, San Francisco Fringe Festival, San Jose Repertory Theatre, San Francisco Playhouse, TheatreWorks, The Jewish Theatre, Thick Description, Word for Word, Z Space, and many others. Marin is the recipient of the Best Actor of the year from East Bay Express, an MVP of the year from Sam Hurwitt (KQED), Marin independent Journal, theidiolet.com), and a Bay Area Critics Circle Award for Outstanding Achievement in a Featured Role. Marin has performed on NBC, CBS, PBS and the BBC.



JOE METHENY (Lucio) is thrilled to be making his debut with Center REP! Previous credits include: *James and the Giant Peach* (Douglas Morrison Theatre), *Bye Bye Birdie* (CCMT), *Guys and Dolls*, *The Wizard of Oz* (DTC), *Scrooge* (Town Hall Theatre),



Jack and the Beanstalk, *Hansel and Gretel* (FFAE). Joe is a junior in high school and competes in competitive swimming and plays water polo. He has been training with Young REP for the past five summers and studies voice with Claire Yarrington. Next year Joe will be auditioning for College Theatre programs and hopes to continue to train in the arts. He thanks his family and friends for all of their support.

LIZZIE O'HARA (Dejanira) is a New York City-based actress and is thrilled to be returning to Center Rep! Recent theatre credits include *Rachel in One Man*, *Two Guvnors* (TheatreSquared), *Penny in The Real Housewives Musical*, *Deirdre in the World Premiere of Mama's Boys* (Robert Moss Theatre), *Val in* (Cabrillo Stage), *Penga in the touring musical Freaky Pets Live!* (Abandon Entertainment), *Woman 2 in Becoming Britney* (The Retro Dome), and *Erato and Kira U/S in the West Coast Premiere of Xanadu* (Guggenheim Entertainment). She also regularly performs with her band Sky-Pony, a Brooklyn-based rock group which the Wall Street Journal describes as "a 1960s girl group on crack—tight, fierce, hilarious and out of their minds." www.sky-pony.com. Big Love and all my thanks to my future husband Josh.



MARK ANDERSON PHILLIPS* (Marchese) is very happy to be back at Center REP. Credits-Regional/International: *A Christmas Carol*, *Witness for the Prosecution*, *Rumors*, *A Midsummer Night's Dream*, *The Mousetrap*, *How the Other Half Loves* (Center REP), *Time Stands Still*, *The 39 Steps*, *Snow Falling on Cedars*, *Opus*, *Theophilus North* (TheatreWorks), *Ideation*, *Abe Lincoln's Big Gay Dance Party* (San Francisco Playhouse), *As You Like It*, *Merry Wives of Windsor* (Santa Cruz Shakespeare), *The Big Meal*, *The Tragical History of Dr. Faustus*, *The Weir*, *Long Day's Journey Into Night* (San Jose Repertory Theatre), *Hir*, *True West* (Magic Theatre), *Good People*, *Waiting for Godot*, *Tiny Alice* (Marin Theatre Company), *Clybourne Park* (Repertory Theatre of St. Louis), *Dr. Jekyll and Mr. Hyde* (Arizona Theatre Company), *Double Indemnity* (A Contemporary Theatre, Seattle), *Salomania*, *Miss Julie*, *Salome*, *Small Tragedy* (Aurora Theatre), *Joan Rivers, a Work in Progress* (Edinburgh Fringe). Directing: *Sleuth*, *The 39 Steps* (Center REP). www.markandersonphillips.com



COLIN THOMSON* (Carlo) has performed at Center REP in *Deathtrap*, *Sweet Charity*, *Lucky Stiff*, *All in the Timing* and *The Voice of the Prairie*. Other local performances include *Noises Off* and *Mountain Days* with the Willows. He appeared in 1776, directed by Frank Galati at ACT, where he also appeared in *Happy End*. He recently performed in D'Arcy Drollinger and Christopher Winslow's *Mr. Irresistible*. Film and television work includes "Blue Jasmine" and NBC's "Trauma." Thomson has performed with TheatreWorks, Marin Theatre Company, San Jose Repertory Theatre, San Jose Stage Company, Shakespeare Santa Cruz, PCPA TheaterFest, and others. Career favorites include *Dirty Blonde* with Portland Center Stage, *Company* with Marin Theatre Company, *All My Sons* with TheatreWorks, Center REP's *All Shook Up* and PCPA's *Yours, Anne*. He has been a member of Actors' Equity Association for 18 years. He returns to Center REP in its upcoming production of *Anything Goes*.



PRODUCTION TEAM

CARLO GOLDONI (Playwright) was an Italian playwright (1707 – 1793) from Venice whose work includes some of Italy's most famous, best-loved and widely performed plays. Writing at the peak of the Enlightenment, his work is known for its mix of wit and honesty, often dramatizing the lives, values and conflicts of the emerging middle class. Goldoni was the great reformer of Italian comedy, freeing it from the conventions of Commedia dell' Arte, and writing more realistically about Italian life and manners. Other notable plays include *A Servant of Two Masters* and *The Venetian Twins*.

TIMOTHY NEAR (Director) is always delighted to return to Center REP and the charming Leshler Theatre. Other shows at Center REP include *Sweet Charity*, *Rumors*, *Noises Off*, *The Mousetrap* and *Doubt*. She has directed plays throughout the U.S. including Repertory Theatre of St. Louis, Arizona Theatre Company, Portland Center Stage, California Shakespeare Theatre, Guthrie Theatre, Cincinnati Playhouse in the Park, Union Square Theatre in NYC, Alliance Theatre in Atlanta, La Jolla Playhouse, Ford's Theatre in D.C., Mark Taper Forum and Tiffany Theatres in L.A., A Contemporary Theatre and The Intiman Theatre in Seattle, Berkeley Rep, Dance Mission in S.F. and The New York Shakespeare Festival. She has also directed for Opera San Jose. From 1987 to 2009 Near was Artistic Director of San Jose Repertory where she produced over 120 plays, including over 20 world premieres, contributed significant leadership as well as artistic and technical guidance to the design and building of a new state of the art theatre facility. She is the recipient of the Woman of Achievement Award in the Arts given by the San Jose Mercury News/Women's Fund and also received the Janet Gray Hays Award for Women in Leadership.

LISA GOTTRICH (Translator) has worked in the Italian film industry in Cinecitta, Rome where she translated and created dubbing scripts from English to Italian for Warner Brothers. She has worked for the U.S. government throughout Europe, and in the trenches of Corporate America. She is a published fiction writer, the one hat she hasn't doffed. To help put her kids through college she teaches Italian, herds goats, makes cheese and runs her business, Bohemian Creamery.

NINA BALL (Scenic Designer) has previously designed the sets for Center REP's productions of *The Underpants*, *Rumors*, *Old Wicked Songs* and *The Storytelling Ability of a Boy*. Her designs have also been seen at A.C.T., Cal Shakes, San Jose Rep, Aurora Theatre Company, Shotgun Players, SF Playhouse, and Z Space, among many others. She has been nominated for numerous San Francisco Bay Area Theatre Critics Circle, Shellie and Arty Awards. Recent awards include SFBATCC Awards for *My Fair Lady* at SF Playhouse and *Metamorphosis* at Aurora Theatre, a BroadwayWorld San Francisco Award for *Care of Trees* at Shotgun Players and an Arty Award for her design of *Eurydice* at Solano College Theatre. Ball is a company member of Shotgun Players and has a MFA in scenic design from San Francisco State University. Her upcoming shows include *Twelfth Night* at Cal Shakes, *Trouble Cometh* at SF Playhouse and *The Liar*, *Much Ado About Nothing* and *Macbeth* at Santa Cruz Shakespeare.

VICTORIA LIVINGSTON-HALL (Costume Designer)

Work at Center REP includes, *Deathtrap*, *The 25th Annual Putnam County Spelling Bee*, *Xanadu* (Shellie Award), *The Underpants*, *Arms and the Man*, *Smoke Joe's Café*, *Boeing Boeing*, *She Loves Me* (BATCC Award), *Dracula*, *Noises Off*, *Witness for the Prosecution* (Shellie Award), and *Cabaret* (Shellie Award and BATCC Award). Work in London includes, "The Long Hard Goodbye"- film, *Olympia* at the Baron's Court Theatre, "S.N.U.B." -feature film- Angry Badger Pictures, "Striklem," The National Film and Television School, British Society of Cinematographers "BSC Test Shoot," "Viv" Skillset Screen Academy, "Midsummer Murders" for Virgin Media and she assisted at the Holland Park Opera productions of *Lakme* and *La Traviata*. Bay Area work includes *A Seagull in the Hamptons* for Shotgun Players, the *ReOrient Festival* for Golden Thread Productions, *Abe Lincoln's Big Gay Dance Party* for SF Playhouse and the NY Fringe Festival, among other shows for Crowded Fire Theatre Co. The Magic Theatre, and Theatre Artaud.

KURT LANDISMAN (Lighting Designer) Local audiences will be familiar with his work through past productions designed for Center REP including *Deathtrap*, *Life Could Be a Dream*, *Ella*, *the Musical*, *Sweet Charity*, *The 39 Steps*, *Old Wicked Songs*, *Xanadu*, *Arms and the Man*, *Blues in the Night*, *Dracula*, *She Loves Me*, *Noises Off*, *All Shook Up*, *Cabaret*, *Ain't Misbehavin'*, *Musical of Musicals (The Musical!)*, *A Midsummer Night's Dream*, *The Mousetrap*, *How the Other Half Loves*, *Around the World in 80 Days*, and *Fugitive Kind*. His designs have been seen throughout the Bay Area at many theaters including San Francisco Opera, ACT, Berkeley Rep, San Jose Rep, Theatreworks, California Shakespeare Festival, The Magic Theatre, and Marin Theatre Company. Locally his work has garnered 16 Bay Area Critics Circle Awards, 5 LA Dramalogue Awards and 5 Shellie Awards. Nationally, his work has been seen at many regional opera & ballet companies, including the Los Angeles Opera, Minnesota Opera, Virginia Opera, Tulsa Opera, and Ballet Arizona. His designs have also been presented off-Broadway, represented at Circle Rep, and the Douglas Fairbanks Theatres. Other designs internationally include world premieres of plays by Sam Shepard in Japan, and Singapore, as well as the San Francisco Opera in Shanghai, China, and the Moscow Circus in Tokyo, Japan.

THEODORE J.H. HULSKER (Sound Designer) is a Bay Area native who has been designing sound professionally in the region since 2010. Past productions include Shotgun Player's productions of *Woyzeck*, *Strangers*, *Babies* and *Antigonick*; *The Chairs* at Cutting Ball Theater; *Yellow*, *Pansy*, and *American Dream* at NCTC; *Boxcar Theater's SpeakEasy*; San Francisco Playhouse's productions of *Seminar*, *Storefront Church*, and *Tree*; and Center REP's productions of *Sleuth* and *Deathtrap*. He was the 2012 recipient of the Eric Landisman Fellowship for Emerging Designer.

THANK YOU TO OUR OPENING NIGHT
DINNER SPONSORS:

Fleming's Prime Steakhouse & Wine Bar
Scott's Seafood Grill and Restaurant

DAVE MAIER (Fight Director) has won several awards for his fight direction. Recent work includes *A Midsummer Night's Dream* (Cal Shakes), *Party People* (Berkeley Rep) and *Tosca* (SF Opera). He is the resident Fight Director for San Francisco Opera and Cal Shakes. He has also composed violence for ACT, San Jose Rep, La Jolla Playhouse, Aurora Theatre, SF Playhouse, Magic Theatre, Berkeley Playhouse, Impact Theatre and Shotgun Players among others. He is a Senior Fight Director with Dueling Arts International and a founding member of Dueling Arts San Francisco. He is currently teaching combat related classes at Berkeley Rep School of Theatre.

JUDY DISBROW (Wig Designer) and her company Theatrical Hairgoods have provided wigs for theatrical productions for over 30 years. She has worked with companies throughout the United States including Diablo Theatre Company, CCMT, La Jolla Playhouse, Arkansas Repertory Theatre, San Francisco Opera, Portland Opera, Florida Grand Opera, as well as many others.

KIRSTEN ROYSTON (Properties Master) is a set, props, production designer, and also, the Resident Technical Director of the Brown Bag Theatre at San Francisco State University. Last year Royston worked on over 42 productions all over the Bay Area. Her current props work can be seen at Marin Theatre Company, Aurora Theatre Company, and Shotgun Players. She recently set designed *Show People* at The Dragon Theatre in Redwood City, and *Thoroughly Modern Millie* at Musical Theatre Works in San Francisco. More of her work can be seen at KirstenRoyston.com

NICOLE S. LANGLEY* (Stage Manager) is pleased to join Center REPeritory for *Mirandolina*. After receiving a BA from San Francisco State, she completed a two year program at Long Wharf Theatre in Connecticut. Following her internship, she worked at theatres across the country including San Jose Repertory Theatre, Marin Shakespeare Company, The Willows Theatre Company, The Fabulous Palm Springs Follies, and Kentucky Repertory Theatre. Theatre is a collaborative process and she would like to thank her family, friends, and all patrons of the theatre for joining that collaboration by supporting the arts.

ALEX LOGEMANN (Deck Manager) is celebrating his 50th show backstage with Center REP. Alex has been backstage for eleven seasons and is beyond pleased to be involved with such an amazing group. Alex has also worked backstage for Contra Costa Musical Theatre and with Diablo Theatre Company. Alex is a proud member of the Fantasy Forum Actors Ensemble. He is very thankful for our community and the fun it provides. "Those who bring sunshine to the lives of others cannot keep it from themselves." James Barrie

THANK YOU TO:
David Möschler
Holly Near
Massimo's Ristorante
Waters Moving and Storage
Associated Services-Alta Water
Zach Larkin
Molly Bell